

1-5-2011

# Common proteomic changes in the hippocampus in schizophrenia and bipolar disorder and particular evidence for involvement of cornu ammonis regions 2 and 3.

Melanie Föcking

*Royal College of Surgeons in Ireland, mfocking@rcsi.ie*

Patrick Dicker

*Royal College of Surgeons in Ireland, patdicker@rcsi.ie*

Jane A. English

*Royal College of Surgeons in Ireland, janeenglish@rcsi.ie*

Klaus Oliver Schubert

*University of Adelaide*

Michael J. Dunn

*University College Dublin*

*See next page for additional authors*

---

## Citation

Föcking M, Dicker P, English JA, Schubert KO, Dunn MJ, Cotter DR. Common proteomic changes in the hippocampus in schizophrenia and bipolar disorder and particular evidence for involvement of cornu ammonis regions 2 and 3. *Archives of General Psychiatry*. 2011;68(5):477-88

This Article is brought to you for free and open access by the Department of Psychiatry at e-publications@RCSI. It has been accepted for inclusion in Psychiatry Articles by an authorized administrator of e-publications@RCSI. For more information, please contact [epubs@rcsi.ie](mailto:epubs@rcsi.ie).

---

**Authors**

Melanie Föcking, Patrick Dicker, Jane A. English, Klaus Oliver Schubert, Michael J. Dunn, and David R. Cotter

---

— Use Licence —



This work is licensed under a [Creative Commons Attribution-Noncommercial-Share Alike 4.0 License](https://creativecommons.org/licenses/by-nc-sa/4.0/).

---

# Common Proteomic Changes in the Hippocampus in Schizophrenia and Bipolar Disorder and Particular Evidence for Involvement of Cornu Ammonis Regions 2 and 3

Melanie Föcking, MSc, PhD; Patrick Dicker, BA, MA, MSc; Jane A. English, MSc, PhD; K. Oliver Schubert, MD; Michael J. Dunn, PhD; David R. Cotter, MD, PhD

**Context:** The hippocampus is strongly implicated in schizophrenia and, to a lesser degree, bipolar disorder. Proteomic investigations of the different regions of the hippocampus may help us to clarify the basis and the disease specificity of the changes.

**Objective:** To determine whether schizophrenia and bipolar disorder are associated with distinct patterns of differential protein expression in specific regions of the hippocampus.

**Design, Setting, and Patients:** A postmortem comparative proteomic study, including validation of differential expression, was performed. Midhippocampus samples from well-matched groups of 20 subjects with schizophrenia, 20 subjects with bipolar disorder, and 20 control cases from the Stanley Medical Research Institute Array Collection were analyzed.

**Main Outcome Measures:** We used laser-assisted microdissection to enrich for tissue from the hippocampal regions and 2-dimensional difference gel electrophoresis to compare protein profiles. Levels of differentially expressed proteins were confirmed by enzyme-linked immunosorbent assay and Western blotting. Hippocampi from haloperidol-treated mice were used to help discriminate drug-associated from disease-associated protein changes.

**Results:** Across all hippocampal regions, 108 protein spots in schizophrenia and 165 protein spots in bipolar disorder were differentially expressed compared with controls. Sixty-one proteins were differentially expressed in both disorders. One hundred fifty-two of these proteins were identified by mass spectrometry, and they implicated a range of different processes including cytoskeletal and metabolic functions. In both disorders, cornu ammonis regions 2 and 3 were affected to a significantly greater degree than other hippocampal regions. Additionally, numerous proteins showed expression changes in more than 1 region and more than 1 disorder. Validation work confirmed changes in septin 11 and in the expression of proteins involved in clathrin-mediated endocytosis in both schizophrenia and bipolar disorder.

**Conclusions:** Overall, similar protein changes were observed in schizophrenia and bipolar disorder and for the first time indicate that the most prominent proteomic changes occur within the hippocampus in cornu ammonis regions 2 and 3. The cytoskeletal protein septin 11 and the cellular trafficking process of clathrin-mediated endocytosis are implicated by our study.

*Arch Gen Psychiatry.* 2011;68(5):477-488

## Author Affiliations:

Departments of Psychiatry (Drs Föcking, Schubert, and Cotter) and Epidemiology and Public Health (Mr Dicker), Royal College of Surgeons in Ireland, Proteome Research Centre, Conway Institute of Biomolecular and Biomedical Research, School of Medicine and Medical Sciences, University College Dublin (Drs English and Dunn), and Department of Psychiatry, Beaumont Hospital (Dr Cotter), Dublin, Ireland.

**H**IPPOCAMPAL ABNORMALITY is one of the most consistent findings in schizophrenia research.<sup>1</sup> Hippocampal volume is reduced in chronic schizophrenia,<sup>2</sup> first-episode psychosis,<sup>3</sup> and the prodrome to psychotic illness.<sup>4</sup> Two separate processes, a neurodevelopmental process and a progressive neuropathological process occurring after the onset of the illness,<sup>5,6</sup> may contribute to these changes. The hippocampus is also implicated in bipolar disorder.<sup>7-9</sup>

The distinct subfields of the hippocampus, comprising the cornu ammonis (CA) regions 1 through 4 and the dentate gyrus (DG), differ anatomically, function-

ally,<sup>10,11</sup> and in their vulnerability to neurological disorders.<sup>1</sup> In schizophrenia, particular vulnerability has been suggested for regions CA2 and CA3,<sup>12-18</sup> but a clear consensus is lacking.<sup>1,12,13</sup> More generally, postmortem studies have shown reduced neuronal number,<sup>14</sup> somal size,<sup>15,16</sup> density of  $\gamma$ -aminobutyric acid (GABA)-ergic neurons,<sup>17,18</sup> and dendritic arborization<sup>19</sup> as well as evidence of glutamatergic dysfunction involving reduced *N*-methyl-D-aspartate (NMDA) and non-NMDA receptor expression.<sup>1,20</sup> Synaptic changes are also described and involve alterations in the expression of several synaptic proteins.<sup>21-27</sup>

Unfortunately, our understanding of the molecular mechanisms underlying hippo-

**Table 1. Demographic Information for the 60 Cases Used in the Comparative 2-Dimensional Difference Gel Electrophoresis Study**

Characteristic	Control (n=20)	Schizophrenia (n=20)	Bipolar Disorder (n=20)
Race, No.			
White	20	20	19
Black	0	0	1
Sex, No.			
Male	15	16	10
Female	5	4	10
Side of brain, No.			
Right	11	10	11
Left	9	10	9
Psychotic features, No.			
No	20	0	6
Yes	0	20	12
Unclear	0	0	2
Cause of death, No.			
Cardiac	18	8	5
Other medical	2	8	8
Suicide	0	4	7
Age, mean (range), y	43.6 (31-57)	41.9 (19-53)	45.7 (19-64)
PMI, mean (range), h	21.0 (9-31)	22.9 (9-35)	25.7 (12-38)
Brain pH, mean (range)	6.59 (6.00-6.94)	6.48 (6.10-6.73)	6.41 (5.87-6.97)
RI, mean (range), h	2.9 (0-7)	4.0 (1-11)	5.8 (1-14) <sup>a</sup>
Lifetime substance abuse score, mean (range) <sup>b</sup>			
Alcohol	0.55 (0-3)	2.35 (0-5)	2.55 (0-5)
Drug	0.20 (0-1)	1.95 (0-5)	1.85 (0-5)
Prescribed psychotropic medication use at time of death, No. on/No. off			
Antipsychotics	0/20	19/1	11/9
Antidepressants	0/20	6/14	10/10
Mood stabilizers	0/20	8/12	14/6

Abbreviations: PMI, postmortem interval; RI, refrigerator interval.

<sup>a</sup>Significantly different ( $P < .05$ ) from controls following independent  $t$  test (disease vs control).

<sup>b</sup>Scores ranged from 1 (low) to 5 (high).

campal alterations in schizophrenia and bipolar disorder is limited. While genomic investigations continue to contribute important insights<sup>28-31</sup> and indeed point to a shared genetic basis,<sup>32,33</sup> the core pathophysiology of these psychotic disorders remains elusive. A major limitation of genetic approaches is that analysis of nucleic acids alone cannot predict expression and function of the proteins they encode because proteins are undergoing a multitude of modifications from transcription to posttranslation.<sup>34</sup> Equally, actual protein levels in cells do not reliably correlate with messenger RNA (mRNA) expression.<sup>35,36</sup> Therefore, direct assessment of proteins, which represent the functional output of the cell, will be indispensable in the search for the molecular basis of psychotic disorders.

Proteomics is the study of the proteome of a particular biological system in a particular state.<sup>37</sup> Using proteomic methods, it is possible to assess global differential protein expression between disease and control states and to obtain novel insights into disease (for reviews, see the articles by English et al,<sup>38</sup> Görg et al,<sup>39</sup> and Tannu and Hemby<sup>40</sup>). Proteomic studies of postmortem brain tissue from subjects with schizophrenia and from subjects with bipolar disorder have focused largely on the dorsolateral prefrontal cortex<sup>41-49</sup> and the anterior cingulate cortex.<sup>50-53</sup> They have demonstrated alterations in cytoskeletal, synaptic, metabolic, and mitochondrial proteins.<sup>42,44-46,48,50,54</sup> To our knowledge, with regard to the hippocampus, there has been 1 previous proteomic study in schizophrenia<sup>54</sup> and none in bipolar disorder.

Our investigation represents the first detailed proteomic study of the human hippocampus in schizophrenia and bipolar disorder. To account for anatomical and functional differences of hippocampal regions, we assessed 4 regions separately (CA1, CA2/3, CA4, and DG) using laser-assisted microdissection to achieve anatomical separation. The results of the study enhance our knowledge of the nature and extent of region-specific protein changes in psychotic disorders and may provide valuable information about the molecular mechanisms involved in these illnesses.

## METHODS

### SAMPLES

#### Human Samples

Human postmortem brain tissue from the midhippocampus at the level of the lateral geniculate nucleus was dissected by Marie J. Webster, PhD, anatomist, Stanley Medical Research Institute. The series consists of 105 subjects, including 35 subjects with schizophrenia, 35 subjects with bipolar disorder, and 35 control cases. Information on prescribed psychotropic medication is provided by the Stanley Medical Research Institute.

A subset of 20 samples from each of these 3 groups was selected to match as closely as possible for age and tissue pH.<sup>55,56</sup> **Table 1** provides detailed demographic information on these

60 subjects. For a detailed breakdown of the main groups of prescribed psychotropic medications (eg, typical and atypical antipsychotics, mood stabilizers, antidepressants), see eTable 1 (<http://www.archgenpsychiatry.com>). Investigators were blind to group identity until completion of the data analysis. Ethical approval was granted by the Royal College of Surgeons in Ireland Research Ethics Committee.

### Laser-Assisted Microdissection

Frozen tissue sections were cut by the Stanley Medical Research Institute and mounted onto membrane-covered slides (PALM Microlaser Technologies AG, Bernried, Germany). From each case, 1 section was stained very briefly with cresyl violet and a detailed image was obtained to mark the boundaries between the different regions (**Figure 1**). Consecutive sections (25 sections for each case) were then stained with methyl green as this had previously been shown not to interfere with protein integrity in laser-assisted microdissection.<sup>57</sup> The laser microdissector (PALM Microlaser Technologies) was used in the cut mode as previously described.<sup>58</sup> Areas of DG, CA4, CA2/3, and CA1 were marked on each methyl green-stained section of each slide using the PALM software, cut using laser-assisted microdissection, collected in microtubes, and stored at  $-80^{\circ}\text{C}$ .

### SEPARATION OF PROTEINS BY 2-DIMENSIONAL DIFFERENCE GEL ELECTROPHORESIS AND IMAGE ANALYSIS

Samples were processed and separated by 2-dimensional difference gel electrophoresis (2D-DIGE) as described previously<sup>42,44,46,59</sup> (for detailed methods, see the eAppendix and eTable 2). After electrophoresis, scanning of the gels with CyDye-labeled proteins was performed on a Typhoon 9410 image scanner (Amersham Biosciences, Little Chalfont, England). Prescans were performed to adjust the photomultiplier tube voltage to obtain images with a maximum intensity of 60 000 to 80 000 units. Images were cropped using ImageQuant software (Amersham Biosciences), and protein quantification across experimental groups was carried out with Progenesis software (Nonlinear Dynamics, Newcastle upon Tyne, England).

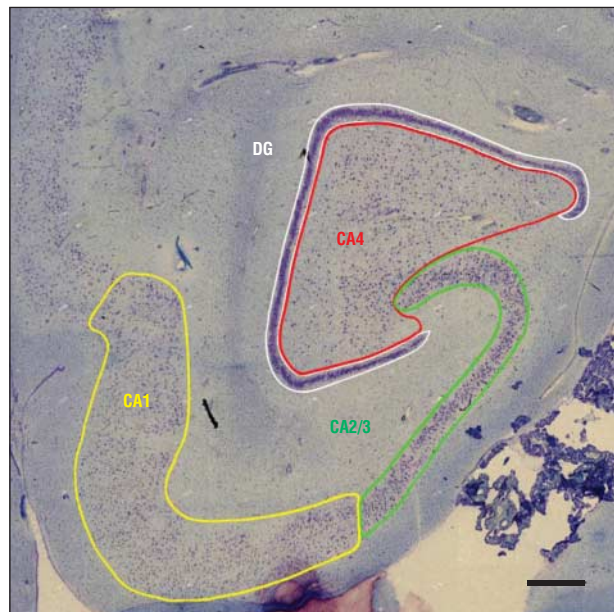
### NETWORK, FUNCTIONAL, AND PATHWAY MAPPING

Ingenuity Pathways Analysis (Ingenuity Systems, Redwood City, California) was used to analyze the key biological relationships of all differentially expressed proteins (**Table 2**). Significant biological functions are categorized as of the signaling and metabolic pathways, molecular networks, and biological processes determined using Fisher exact test to compare the number of proteins that are most significantly perturbed in the data set.

### VALIDATION OF DIFFERENTIALLY EXPRESSED PROTEINS

#### Human Tissue

We selected 9 proteins for validation based on their potential scientific interest, the fold changes, the number of hippocampal regions affected, and the availability of antibodies. For 3 of the proteins chosen, namely BCL2 inhibitor protein, cathepsin D, and N(G),N(G)-dimethylarginine dimethylaminohydrolyase, enzyme-linked immunosorbent assays or Western blots were not successfully optimized. However, validation work was successfully undertaken using enzyme-linked immunosor-



**Figure 1.** Photomicrograph of a cresyl violet-stained midhippocampal section showing the regions investigated in this study. DG indicates dentate gyrus; CA1, cornu ammonis region 1; CA2/3, cornu ammonis region 2/3; and CA4, cornu ammonis region 4. Scale bar = 1 mm.

bent assay (protein-L-isoaspartate-O-methyltransferase [PCMT1]), Western blotting (spectrin, alpha, nonerythrocytic 1 [SPTAN1], armadillo repeat containing, X-linked 1 [ARMCX1], annexin A6 [ANXA6], and septin 11 [SEPT11]), and dot blot (fascin 1 [FSCN1]) in samples from the Stanley Medical Research Institute Array Collection (eAppendix) based on the suitability of the antibodies. Because the laser-captured material from hippocampal regions was very limited in quantity, for the proteins confirmed by Western blotting we were obliged to confirm differential protein expression on pooled samples such that every group was represented by 4 pools of 5 cases. Within each diagnostic group, subjects were randomly allocated to the 4 separate pools (eTable 3).

### Haloperidol-Treated Mice

To assess the effects of psychotropic medication on the expression of candidate proteins, hippocampal tissue was harvested from mice treated with 0.5 mg/kg of haloperidol for 28 days (eAppendix). Western blotting was undertaken on mouse hippocampal tissue homogenates for ANXA6, FSCN1, PCMT1, SEPT11, and SPTAN1 (eAppendix).

### STATISTICAL ANALYSIS

Normalized spot volume data were extracted from the Progenesis software and log base 10 transformed prior to analysis to eliminate distributional skew and to give approximate normality. We chose, a priori, the covariates postmortem interval, refrigerator interval, and brain pH to be of interest as possible confounders of protein abundance, with the additional inclusion of drug use (antipsychotics, antidepressants, and mood stabilizers) as secondary analyses. Freezer time was not significantly different between groups and we did not include this variable as a potential confounder. Other covariates, which may also be considered as possible confounders, were highly correlated with our chosen set of covariates; for example, antipsychotic dose (included in secondary analysis), drug abuse, smoking history, and alcohol use were all highly correlated with each



**Table 2. Network, Functional, and Pathways Mapping<sup>a</sup>**

Category	Region	P Value, Range	Molecules
<b>Schizophrenia</b>			
Cellular assembly and organization	CA4	$8.32 \times 10^{-5}$ to $4.68 \times 10^{-2}$	BNIP3 (includes EG:664), ACTB, GFAP, SEPT11, SNCA
	DG	$2.73 \times 10^{-3}$ to $3.93 \times 10^{-2}$	CTSD, GFAP
	CA2/3	$2.26 \times 10^{-5}$ to $4.66 \times 10^{-2}$	HSPA8, BNIP3 (includes EG:664), CTSD, STMN1, SOD1, DPYSL3, NEFL, FSCN1, GFAP, SEPT11, SYT1, TUBB
Cellular compromise	CA1	$2.46 \times 10^{-5}$ to $4.79 \times 10^{-2}$	UCHL1, STMN1, NEFL, ANXA5, HSP90AA1, GFAP, TUBB
	CA4	$5.04 \times 10^{-4}$ to $4.81 \times 10^{-2}$	PRDX1, SEPT11, SNCA, ATP6V1B2
	CA2/3	$1.82 \times 10^{-3}$ to $3.14 \times 10^{-2}$	CTSD, PRDX1, ATP6V1B2
Cell morphology	CA1	$1.32 \times 10^{-3}$ to $4.54 \times 10^{-2}$	CTSD, STMN1, SOD1, SEPT11, TUBB, ATP6V1B2
	CA4	$1.41 \times 10^{-3}$ to $4.27 \times 10^{-2}$	STMN1, ANXA5, HSP90AA1, TUBB
	DG	$9.10 \times 10^{-4}$ to $2.52 \times 10^{-2}$	BNIP3 (includes EG:664), ENO1, PRDX1, SNCA
Cell signaling	CA1	$1.32 \times 10^{-3}$ to $1.84 \times 10^{-2}$	CTSD, PRDX1
	CA4	$1.41 \times 10^{-3}$ to $1.41 \times 10^{-3}$	BNIP3 (includes EG:664), CTSD, STMN1, SOD1, NEFL, DPYSL3, HSP90AA1
	DG	$9.10 \times 10^{-4}$ to $5.45 \times 10^{-3}$	STMN1, NEFL, ENO1, ANXA5, HSP90AA1
Cell-to-cell signaling and interaction	CA1	$9.89 \times 10^{-3}$ to $3.90 \times 10^{-2}$	YWHAE
	CA4	$1.32 \times 10^{-3}$ to $4.66 \times 10^{-2}$	PVALB
	DG	$1.82 \times 10^{-3}$ to $1.82 \times 10^{-3}$	STMN1, SOD1, SYT1
Cellular function and maintenance	CA1	$3.97 \times 10^{-3}$ to $2.75 \times 10^{-2}$	STMN1, YWHAE, HSP90AA1
	CA4	$2.65 \times 10^{-3}$ to $3.00 \times 10^{-2}$	GFAP, SNCA
	DG	$4.54 \times 10^{-3}$ to $2.61 \times 10^{-2}$	GFAP
Cellular growth and proliferation	CA1	$1.05 \times 10^{-4}$ to $4.28 \times 10^{-2}$	SOD1, NEFL, GFAP
	CA4	$3.40 \times 10^{-4}$ to $2.87 \times 10^{-2}$	UCHL1, NEFL, ANXA5, GFAP
	DG	$9.10 \times 10^{-4}$ to $4.55 \times 10^{-2}$	BNIP3 (includes EG:664), PRDX1, SNCA, ATP6V1B2
Drug metabolism	CA1	$1.99 \times 10^{-3}$ to $4.97 \times 10^{-2}$	PVALB, PRDX1, ATP6V1B2
	CA4	$1.41 \times 10^{-3}$ to $4.27 \times 10^{-2}$	BNIP3 (includes EG:664), STMN1, SOD1, NEFL, FSCN1, SYT1, TUBB, ATP6V1B2
	DG	$9.10 \times 10^{-4}$ to $9.10 \times 10^{-4}$	STMN1, NEFL, TUBB
<b>Bipolar Disorder</b>			
Cellular assembly and organization	CA4	$1.41 \times 10^{-3}$ to $4.00 \times 10^{-2}$	SPINK7, ENO1, SNCA
	DG	$9.10 \times 10^{-4}$ to $4.55 \times 10^{-2}$	SPINK7, CTSD
	CA2/3	$1.99 \times 10^{-3}$ to $4.97 \times 10^{-2}$	BNIP3 (includes EG:664), CTSD, STMN1, ALDH1A1, SOD1
Cellular function and maintenance	CA1	$1.32 \times 10^{-3}$ to $1.71 \times 10^{-2}$	STMN1, ENO1
	CA4	$8.41 \times 10^{-3}$ to $3.60 \times 10^{-2}$	SNCA
	DG	$9.10 \times 10^{-4}$ to $9.10 \times 10^{-4}$	PVALB
Cell death	CA1	$1.99 \times 10^{-3}$ to $4.66 \times 10^{-2}$	STMN1, SOD1, ALDH1A1, SYT1
	CA4	$1.41 \times 10^{-3}$ to $4.00 \times 10^{-2}$	CRYAB, SOD1, FSCN1, SEPT11, DCTN2
	DG	$9.84 \times 10^{-6}$ to $3.77 \times 10^{-2}$	CRYAB, SOD1, PARK7, NEFM, TUBB, LGALS1
Cell cycle	CA1	$1.55 \times 10^{-7}$ to $4.38 \times 10^{-2}$	DPYSL2, SOD1, NEFL, DPYSL3, ACTB, YWHAZ, VIM, INA, TUBB, SNAP25, DCTN2, HSPA8, DNMI, BNIP3 (includes EG:664), STMN1, ANXA6, FSCN1, GFAP
	CA4	$1.41 \times 10^{-3}$ to $2.78 \times 10^{-2}$	STMN1, SOD1, NEFL, ACTB, ARPC5, YWHAZ, GFAP, INA, TUBB, MAP2K1
	DG	$4.58 \times 10^{-5}$ to $3.77 \times 10^{-2}$	PVALB, SOD1, FSCN1, ATP6V1B2
Cell signaling	CA1	$4.91 \times 10^{-6}$ to $4.89 \times 10^{-2}$	PVALB, SOD1, PARK7, PRDX1, NEFM, TUBB, ATP6V1B2
	CA4	$1.55 \times 10^{-7}$ to $3.23 \times 10^{-2}$	DPYSL2, PVALB, SOD1, NEFL, VIM, INA, TUBB, SNAP25, DCTN2, DNMI, BNIP3 (includes EG:664), STMN1, ATP5B, FSCN1
	DG	$7.07 \times 10^{-4}$ to $3.46 \times 10^{-2}$	STMN1, SOD1, NEFL, INA, TUBB, NAPB
Cellular compromise	CA1	$1.32 \times 10^{-3}$ to $3.93 \times 10^{-2}$	GSTP1, CRYAB, SOD1, ATP5H (includes EG:10476), DCTN2
	CA4	$6.08 \times 10^{-5}$ to $5.00 \times 10^{-2}$	CRYAB, SOD1, PARK7, ENO1, PRDX1, ATP5H (includes EG:10476), RGN, LGALS1
	DG	$6.08 \times 10^{-5}$ to $5.00 \times 10^{-2}$	TUBB3, GSTP1, SOD1, YWHAZ, NEFL, ACTB, NQO2, YWHAZ, DCTN2, DNMI, HSPA8, BNIP3 (includes EG:664), MTPN, STMN1, ALDH1A1, ENO1, STIP1, ATP5H (includes EG:10476), HSP90AA1, GMFB, PAFAH1B3, PHB (includes EG:5245), ALDOC
Drug metabolism	CA1	$6.28 \times 10^{-6}$ to $4.95 \times 10^{-2}$	STMN1, SOD1, ENO1, NEFL, ACTB, YWHAZ, HSP90AA1, TUBB, NAIF1, MAP2K1
	CA4	$1.41 \times 10^{-3}$ to $3.87 \times 10^{-2}$	CRYAB, SOD1, DCTN2
	DG	$2.65 \times 10^{-3}$ to $3.64 \times 10^{-2}$	CRYAB, SOD1, TUBB, LGALS1
Cellular assembly and organization	CA1	$8.93 \times 10^{-4}$ to $4.58 \times 10^{-2}$	DNMI, HSPA8, STMN1, TUBB3, YWHAZ, HSP90AA1, VIM, TUBB, PHB (includes EG:5245), DCTN2
	CA4	$2.98 \times 10^{-3}$ to $4.09 \times 10^{-2}$	STMN1, SOD1, HSP90AA1, TUBB, MAP2K1
	DG	$1.32 \times 10^{-3}$ to $4.66 \times 10^{-2}$	PVALB, SOD1, DDAH1
Cellular compromise	CA1	$4.37 \times 10^{-3}$ to $2.94 \times 10^{-2}$	PVALB, SOD1, PRDX1, DDAH1, LGALS1
	CA4	$1.22 \times 10^{-4}$ to $3.32 \times 10^{-2}$	PVALB, STMN1, YWHAZ, DDAH1, HSP90AA1
	DG	$1.32 \times 10^{-3}$ to $4.54 \times 10^{-2}$	STMN1, SOD1, MAP2K1
Drug metabolism	CA1	$3.92 \times 10^{-4}$ to $4.38 \times 10^{-2}$	SOD1, SEPT11, ATP6V1B2, DCTN2
	CA4	$5.04 \times 10^{-4}$ to $1.26 \times 10^{-2}$	SOD1, PRDX1, NEFM, TUBB, ATP6V1B2
	DG	$1.06 \times 10^{-3}$ to $3.13 \times 10^{-2}$	TUBB3, STMN1, SOD1, VIM, TUBB, GMFB, DCTN2
Cellular assembly and organization	CA1	$1.49 \times 10^{-3}$ to $3.52 \times 10^{-2}$	STMN1, SOD1, TUBB, MAP2K1
	CA4	$5.04 \times 10^{-4}$ to $1.26 \times 10^{-2}$	PVALB, GSTP1, SOD1, STIP1
	DG	$1.06 \times 10^{-3}$ to $3.13 \times 10^{-2}$	PVALB, SOD1, PARK7, LGALS1
Cellular compromise	CA1	$7.25 \times 10^{-4}$ to $4.89 \times 10^{-2}$	PVALB, STMN1, GSTP1, SOD1, ALDH1A1, STIP1, SNAP25, GMFB
	CA4	$1.49 \times 10^{-3}$ to $3.52 \times 10^{-2}$	STMN1, SOD1
	DG	$1.06 \times 10^{-3}$ to $3.13 \times 10^{-2}$	

Abbreviations: CA, cornu ammonis; DG, dentate gyrus.

<sup>a</sup>Interaction networks and high-level functions of differentially expressed proteins were identified using Ingenuity Pathways Analysis (Ingenuity Systems, Redwood City, California). The UniProt accession numbers and fold change values of significantly altered proteins were submitted to Ingenuity Pathways Analysis for analysis. Significant biological functions are categorized as being of the signaling and metabolic pathways, molecular networks, and biological processes determined using the Fisher exact test to compare the number of proteins that are most significantly perturbed in the data set. Ingenuity Pathways Analysis was also used to identify canonical pathways in the entire data set of differentially expressed proteins.

other (correlation >0.7). Consequently, we did not make further adjustment for these.

Analysis of covariance (ANCOVA) was performed on the normalized spot volumes for each spot in each brain region, with age, postmortem interval, refrigerator interval, and brain pH included as covariates. Estimated differences between schizophrenia or bipolar disorder samples and controls were then obtained using linear contrasts and exponentiated to obtain fold changes. Significance testing was then performed at the 5% level using ANCOVA. Statistically significant protein spots, adjusted for the covariates, were identified by mass spectrometry. A false discovery rate<sup>60</sup> of 5%, which incorporated data from the 4 brain regions in a single model (as a factor) while allowing different brain regions to differ in effect, was used to flag those spots statistically significant after adjustment for multiple comparisons.

A  $\chi^2$  test of association was used to determine whether the frequency of statistically significant spots was different between the 4 hippocampal regions. The ANCOVA results for each region were then combined to assess the number of regions in which a spot was statistically significant and to determine the degree of overlap of statistically significant spots in adjacent hippocampal regions.

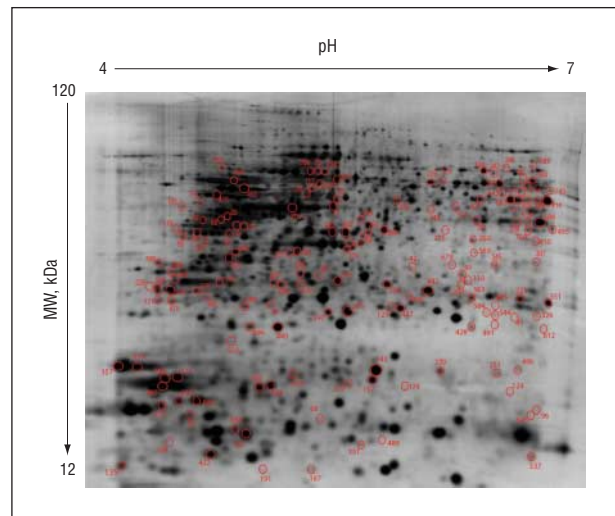
Two overall post hoc statistical approaches were undertaken to assess the effects of antipsychotropic medications, antidepressants, and mood stabilizers on the protein expression profiles. The patients with schizophrenia and bipolar disorder were combined into 1 group and the control subjects were excluded from this analysis. First, the effect of use of psychotropic medications at the time of death (on or off these medications) was analyzed using ANCOVA, adjusting for the covariates mentioned previously. Second, the cumulative effect of antipsychotic medications (fluphenazine equivalents in milligrams)<sup>61</sup> on spot abundances was assessed. Lifetime antipsychotic dose was highly skewed; as a consequence, the combined group of subjects with schizophrenia and subjects with bipolar disorder was classified based on sample size into 1 of 6 categories as follows: (1) dose of 0 fluphenazine equivalents ( $n=6$ ); (2) dose of 5 to 3000 fluphenazine equivalents ( $n=6$ ); (3) dose of 4000 to 12 000 fluphenazine equivalents ( $n=7$ ); (4) dose of 15 000 to 25 000 fluphenazine equivalents ( $n=7$ ); (5) dose of 30 000 to 90 000 fluphenazine equivalents ( $n=6$ ); and (6) dose of 100 000 to 400 000 fluphenazine equivalents ( $n=7$ ).<sup>46</sup> Note that the dose was unavailable for 1 patient, and this case was excluded from this analysis.

The management of data and statistical analyses were carried out with SAS version 9.1 statistical software (SAS Institute, Inc, Cary, North Carolina) and R version 9.1 statistical software (R Foundation for Statistical Computing, Vienna, Austria).

## RESULTS

### 2D-DIGE ANALYSIS

A total of 832 protein spots were identified on the master gel image, and these were matched across all gel images and statistically analyzed using ANCOVA (correcting for age, brain pH, postmortem interval, and refrigerator interval). Post hoc analysis investigating the effect of freezer time showed that including this variable in the analysis had no influence on our results. Across all hippocampal regions, 141 proteins (representing 108 individual protein spots) in schizophrenia and 203 proteins (representing 165 individual protein spots) in bipolar disorder were differentially expressed compared with con-



**Figure 2.** A representative 2-dimensional difference gel electrophoresis gel, pH 4 to 7, indicating the protein spots found to be significantly altered in schizophrenia and/or bipolar disorder and subsequently identified with mass spectrometry. Protein identification numbers relate to the proteins listed in eTable 4 and eTable 5. MW indicates molecular weight.

trols. Sixty-one of these proteins were altered in both disorders. Note that 1 protein can be represented by more than 1 spot and several spots were differentially expressed in more than 1 region.

Differential expression in the regions was observed as follows: DG, 23 spots in schizophrenia and 26 spots in bipolar disorder; CA4, 32 spots in schizophrenia and 30 spots in bipolar disorder; CA2/3, 53 spots in schizophrenia and 113 spots in bipolar disorder; and CA1, 33 spots in schizophrenia and 34 spots in bipolar disorder. Thirty-two proteins in schizophrenia and 38 proteins in bipolar disorder were altered across more than 1 hippocampal region.

Accounting for proteins altered in both disorders and across several regions, 213 protein spots in total were differentially expressed. Of these, 152 protein spots were successfully identified by mass spectrometry. eTable 4 and eTable 5 list these findings, including details of their functional ontology and significance after adjusting for multiple comparisons (false discovery rate <5%). Identified protein spots are also indicated on a representative 2D-DIGE gel in **Figure 2**.

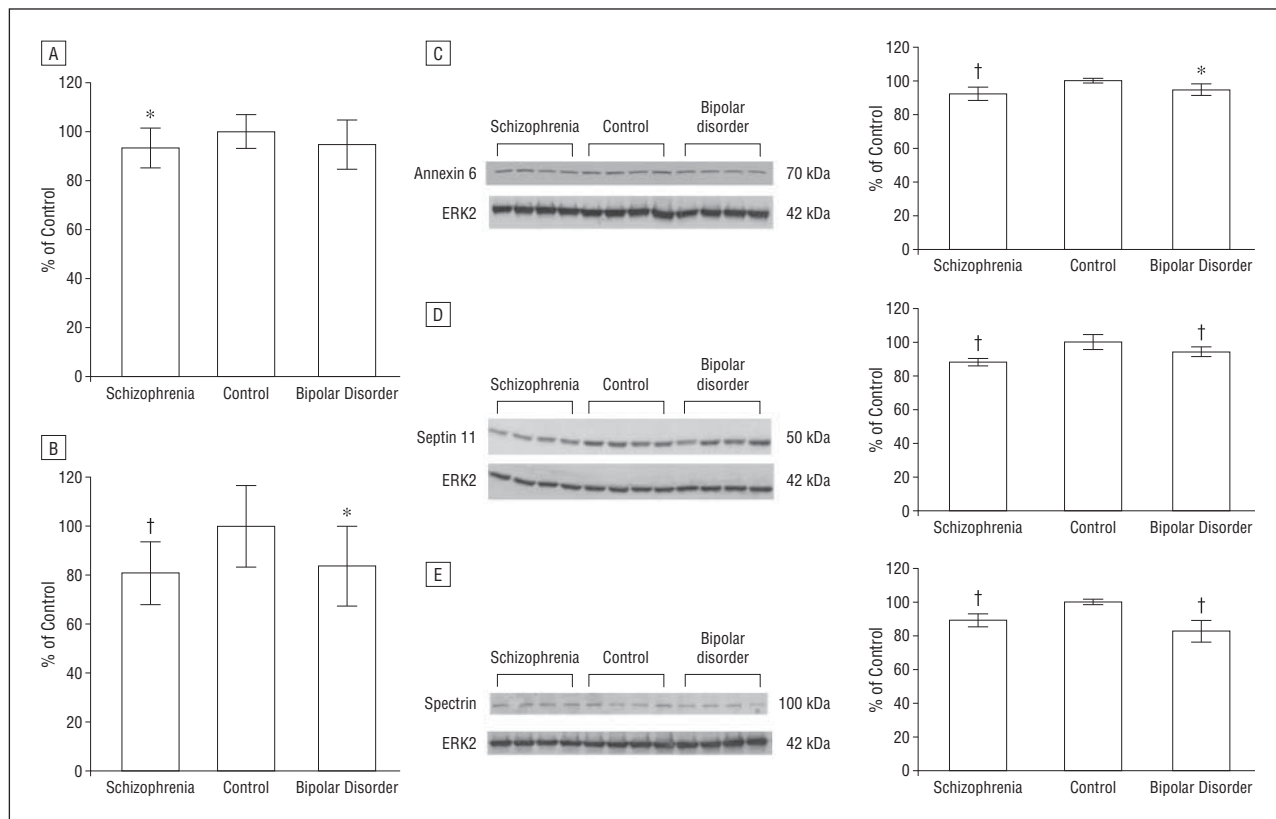
### REGION-SPECIFIC VULNERABILITY

We found a significant association between the hippocampal regions and the number of protein spots differentially expressed between schizophrenia and controls ( $\chi^2$  test,  $P=.002$ ). In bipolar disorder, this effect was even more prominent, with 113 spots differentially expressed in CA2/3 ( $\chi^2$  test,  $P<.001$ ).

### PROTEIN SPOTS DIFFERENTIALLY EXPRESSED IN MULTIPLE REGIONS

For schizophrenia, 141 spots were found to be differentially expressed in any brain region. This represented a set of 108 unique spots, of which 80 (74%) were unique





**Figure 3.** Validation of differentially expressed proteins. \* $P < .05$ ; † $P < .005$ . Protein expression changes were determined by fascin 1 dot blot (cornu ammonis [CA] region 2/3) (A) and PCMT1 enzyme-linked immunosorbent assay (CA4) (B) analysis in the 60 cases of the Stanley Medical Research Institute Array Collection. The means of 3 independent experiments are presented. Error bars indicate standard deviation. C-E, Western blots were prepared using lysates of subpools of hippocampus samples from patients with schizophrenia (lanes 1-4), control subjects (lanes 5-8), and patients with bipolar disorder (lanes 9-12). Immunoblots were incubated with antibodies that specifically recognize annexin 6 at 70 kDa (CA2/3) (C), septin 11 at 50 kDa (CA4) (D), spectrin at 100 kDa (CA2/3) (E), and ERK2, used as a loading control, at 42 kDa. The images show a typical blot and the corresponding graphs represent the signal intensity of the designated antibody measured by densitometry and corrected by the signal intensity of ERK2. The mean of 3 to 4 independent experiments is presented. Error bars indicate standard deviation. ERK2 showed no significant differences between disease and control (schizophrenia,  $P = .82$ ; bipolar disorder,  $P = .65$ ). In contrast to our 2-dimensional difference gel electrophoresis findings, significant changes were confirmed for fascin 1 in schizophrenia in CA2/3 but not in bipolar disorder. In keeping with our 2-dimensional difference gel electrophoresis experiments, PCMT1 and septin 11 expression were reduced in CA4 in both diseases. Annexin 6 and spectrin were found to be reduced in CA2/3 in bipolar disorder only. The Western blot results for both proteins confirmed significant reduction in bipolar disorder as well as schizophrenia.

to a single brain region and the remaining 28 (26%) were differentially expressed in at least 2 brain regions. For bipolar disorder, a total of 203 spots were differentially expressed in any brain region. This represented a set of 165 unique spots, of which 131 (79%) were differentially expressed in a single brain region and 34 (21%) were expressed in 2 or more brain regions.

#### POST HOC STATISTICAL ANALYSIS OF MEDICATION EFFECTS

The first post hoc analysis found 37 of the identified proteins to be affected by psychotropic medication status at the time of death. The second post hoc analysis (the linear regression model) of the effects of lifetime antipsychotic dose found that only 16 spots were influenced by antipsychotic dose. For most spots implicated by the post hoc analyses, the direction of the fold change associated with psychotropic medications ( $n = 29$  of 37) and lifetime antipsychotic dose ( $n = 9$  of 16) was influenced in the direction opposite to that observed in disease groups (eTable 5, "Post Hoc On/Off Medication and Antipsychotic Dose" column).

#### VALIDATION OF PROTEOMIC FINDINGS

Extensive validation to confirm the findings obtained using 2D-DIGE was undertaken. See **Figure 3** for the details of this validation work.

##### Validation Using 60 Samples

**ARMCX1.** Using Western blotting on subpooled samples and individual samples from CA2/3, no significant differences between groups were observed. Results from 2D-DIGE showed a reduced expression in CA2/3 in bipolar disorder ( $-1.65$ -fold;  $P = .01$ ) and in schizophrenia ( $-1.59$ -fold;  $P = .009$ ).

**FSCN1.** Dot blots from samples of CA2/3 showed trend reductions in protein levels for both diseases (ANCOVA,  $P = .07$ ). Post hoc  $t$  tests confirmed reductions in schizophrenia ( $-6.3\%$ ;  $P = .03$ ) but not in bipolar disorder ( $-5.4\%$ ;  $P = .11$ ). Results from 2D-DIGE showed a reduced expression in CA4 for 2 spots in bipolar disorder ( $-1.11$ -fold [ $P = .04$ ] and  $-1.13$ -fold [ $P = .03$ ]) and in CA2/3 for 2 spots in bipolar disorder ( $-1.15$ -fold [ $P = .002$ ] and

-1.13-fold [ $P = .001$ ]) and 1 spot in schizophrenia (-1.12-fold;  $P = .004$ ).

**PCMT1.** Using enzyme-linked immunosorbent assay, reduced expression in disease groups in CA4 was confirmed (ANCOVA,  $P < .001$ ). Post hoc *t* tests confirmed reductions in schizophrenia (-19.2%;  $P < .001$ ) and bipolar disorder (-16.3%;  $P < .001$ ). Results from 2D-DIGE showed a reduced expression in CA4 in schizophrenia (-1.34-fold;  $P = .005$ ) and bipolar disorder (-1.23-fold;  $P = .02$ ), in the DG in schizophrenia (-1.29-fold;  $P = .01$ ), and in CA2/3 in bipolar disorder (-1.16-fold;  $P = .03$ ).

### Validation Using Pooled Samples

**SPTAN1.** Using Western blotting on subpooled samples of CA2/3, reduced expression in disease groups was confirmed (ANCOVA,  $P < .001$ ). Post hoc *t* tests confirmed reductions in bipolar disorder (-17.3%;  $P < .001$ ) and schizophrenia (-10.8%;  $P = .004$ ). Results from 2D-DIGE showed a reduced expression in CA2/3 only in bipolar disorder in 2 spots (-1.21-fold [ $P = .03$ ] and -1.36-fold [ $P = .04$ ]).

**ANXA6.** Using Western blotting on subpooled samples of CA2/3, reduced expression in disease groups was confirmed (ANCOVA,  $P = .006$ ). Post hoc *t* tests confirmed reductions in bipolar disorder (-6.3%;  $P = .02$ ) and schizophrenia (-7.8%;  $P = .002$ ). Results from 2D-DIGE showed a reduced expression in CA2/3 only in bipolar disorder (-1.45-fold;  $P = .02$ ).

**SEPT11.** Using Western blotting on subpooled samples of CA4, reduced expression in disease groups was confirmed (ANCOVA,  $P < .001$ ). Post hoc *t* tests confirmed reductions in schizophrenia (-11.2%;  $P < .001$ ) and bipolar disorder (-6.0%;  $P = .002$ ). Results from 2D-DIGE showed a reduction in 2 spots in CA4 in schizophrenia (-1.14-fold [ $P = .04$ ] and -1.20-fold [ $P = .01$ ]) and in bipolar disorder (-1.12-fold;  $P = .04$ ) as well as a reduction in CA2/3 in bipolar disorder (-1.17-fold;  $P = .01$ ).

### CANDIDATE PROTEIN CHANGES IN HALOPERIDOL-TREATED MICE

Western blot analysis demonstrated that ANXA6, FSCN1, PCMT1, SEPT11, and SPTAN1 were not significantly altered in mice treated with haloperidol (eFigure). This confirmed that our findings are disease related rather than drug related.

### COMMENT

Our study has 3 main findings. First, we have shown that all hippocampal regions demonstrate disease-associated protein expression changes in schizophrenia and bipolar disorder, with the CA2/3 region showing the most prominent changes. Second, while changes are most prominent in bipolar disorder, they occur consistently in the same direction in both diseases and are in keeping with a shared common genetic basis.<sup>32,33</sup> These changes

particularly implicate cytoskeletal and metabolic changes. Finally, our results point to clathrin-mediated endocytosis (CME) as a novel contributor to the pathophysiology of psychotic disorders. Clathrin-mediated endocytosis is crucially involved in presynaptic and postsynaptic vesicle and receptor recycling and regulation, which have been proposed to be disturbed in psychosis.<sup>62</sup>

Previous studies have suggested that the CA2/3 region of the hippocampus may be particularly vulnerable to neuropathological changes in psychosis.<sup>18,63-68</sup> This is particularly evident in relation to the pathology of GABAergic interneurons in schizophrenia<sup>15,18,69-72</sup> but is less clear in relation to markers of synaptic and glutamatergic function<sup>72,73</sup> and in relation to mood disorders.<sup>7,65,72,74,75</sup> Using an unbiased proteomic approach to assess protein changes within different hippocampal fields, we have shown an excess of differential protein expression in disease within CA2/3 compared with the other regions. It has been suggested that this region shows a particular vulnerability in schizophrenia<sup>17</sup> possibly owing to altered basolateral amygdala projections to CA2/3.<sup>17,76-79</sup> The CA2/3 region has close functional connections to many other brain regions including the hypothalamus, septal nucleus,<sup>80</sup> subiculum,<sup>81</sup> and the CA1 region of the hippocampus.<sup>82</sup> Thus, while we confirm and extend the knowledge implicating the hippocampus and the CA2/3 region in schizophrenia<sup>20,83</sup> and bipolar disorder, changes in this region will have widespread consequences within the brain.

Our second main finding is that we have identified a total of 152 differentially expressed proteins in schizophrenia and bipolar disorder. Sixty-one proteins were altered in both disorders; without exception, the changes (where significant) occurred in the same direction in both conditions. Furthermore, among proteins showing significant changes in only 1 group, the direction of the fold change in the other disease group was in the same direction in more than 95% of cases (eTable 5). Perhaps surprisingly, the most prominent changes were found in bipolar disorder. Given the lack of hippocampal volume changes in bipolar disorder<sup>84</sup> compared with schizophrenia,<sup>73</sup> these findings might seem counterintuitive. However, functional hippocampal deficits exist in both disorders,<sup>85,86</sup> and increasing evidence suggests that schizophrenia and bipolar disorder share common genetic vulnerabilities.<sup>87</sup> Our findings therefore provide further support for a reappraisal of these disorders as distinct diagnostic entities,<sup>32</sup> although other evidence for the distinct character must also be considered in any such reappraisal.<sup>32,49,88,89</sup>

In keeping with previous proteomic studies of schizophrenia and bipolar disorder,<sup>38</sup> including one of the hippocampus in schizophrenia,<sup>90</sup> our findings implicate proteins involved in cytoskeletal<sup>42,46,90</sup> and metabolic<sup>42,45,46,48,58</sup> cellular mechanisms and, specifically in bipolar disorder, cell death pathways.<sup>91,92</sup> The results complement findings of transcriptomic investigations in these brain regions.<sup>9,93-98</sup> In the cases of ANXA6, Bcl2 inhibitor protein BNIP3, N(G),N(G)-dimethylarginine dimethylaminohydrolase, galectin-1, and heat shock cognate 71-kDa protein, our findings are supported by recent genome-wide association studies.<sup>99</sup> Ingenuity Pathways Analysis in our study notably identified cellular assembly and organiza-

tion as one of the main categories of protein function altered in both schizophrenia and bipolar disorder (Table 2).

Abnormalities in cellular assembly and organization are illustrated by differential expression of SEPT11 and FSCN1, both of which contribute to this pathway. We observed prominent reductions in the expression of SEPT11 in both schizophrenia and bipolar disorder in CA2/3 and in CA4. We confirmed this reduction by Western blotting in CA4 in schizophrenia and bipolar disorder. We and others have previously found changes in SEPT11 in schizophrenia,<sup>100</sup> although our previous study of the dorsolateral prefrontal cortex showed increased expression in schizophrenia and bipolar disorder.<sup>44</sup> This contrast with our current findings may be explained by a region-specific effect and the possibility that SEPT11 is represented on the 2D-DIGE gel by more than 1 protein spot. Septin 11 has roles in myelination,<sup>101</sup> dendrite spine morphology,<sup>102</sup> and GABAergic synaptic connectivity,<sup>103</sup> and alterations of SEPT11 are thus highly relevant to schizophrenia.<sup>73</sup> We also observed reduced expression of FSCN1 in CA2/3 in schizophrenia and at trend level in bipolar disorder. Fascin 1 is an actin-bundling protein that has roles in neurite outgrowth.<sup>104</sup> These findings are in keeping with the presence of altered cytoskeletal dynamics<sup>105</sup> in these disorders.<sup>46</sup>

Our third main finding is that our study implicates the process of CME in psychotic disorders by showing altered expression of proteins involved in or regulating this pathway, namely synaptotagmin, heat shock cognate 71-kDa protein,<sup>106</sup> cathepsin D,<sup>107</sup> dynactin subunit 2,<sup>108,109</sup> ANXA6, PCMT1, and SPTAN1. Clathrin-mediated endocytosis is a key cellular signaling process involved in the fine-tuning of neurotransmission,<sup>106,110-112</sup> and we have previously demonstrated changes of protein members of the CME interactome,<sup>106</sup> namely amphiphysin,<sup>46</sup> clathrin adaptor protein complex 2,<sup>113</sup> protein kinase C and casein kinase in neurons 1,<sup>44</sup> syntaxin-binding protein 1,<sup>42</sup> and dynamin-1.<sup>44</sup> These changes are in keeping with studies that found similar changes in the expression of SPTAN1,<sup>45</sup> heat shock cognate 71-kDa protein,<sup>114</sup> cathepsin D,<sup>90</sup> and the clathrin coat assembly protein AP180 in schizophrenia.<sup>49</sup> Findings have not, however, been entirely consistent; for example, dynamin-1 expression changes have been observed in some<sup>45,49,51</sup> but not all<sup>115,116</sup> studies, and changes in dynactin subunit 2 were observed in the opposite direction in a previous proteomic study of the anterior cingulate cortex.<sup>51</sup> Consequently, we focused some of our validation experiments on proteins involved in CME and we confirmed changes in ANXA6, PCMT1, and SPTAN1. Annexin 6, which was confirmed to be downregulated in CA2/3 in bipolar disorder and schizophrenia, is a component of clathrin-coated vesicles<sup>117,118</sup> and binds clathrin adaptor protein complex 2 to mediate interaction between endocytosing plasma membrane proteins and clathrin.<sup>117</sup> Spectrin, which was also confirmed to be downregulated in bipolar disorder in CA2/3, is enriched in neurons and together with actin contributes to endocytosis<sup>119-121</sup> and NMDA receptor activity.<sup>122</sup> Finally, we observed reduced expression of the enzyme PCMT1 in CA4 in schizophrenia and bipolar disorder. It is highly expressed in the brain and participates in the degradation and/or repair of damaged proteins, including the core CME

protein clathrin.<sup>123</sup> In keeping with this latter finding, previous work has shown a downregulation of PCMT1 mRNA in the hippocampus in bipolar disorder.<sup>9</sup>

These findings implicate CME in schizophrenia and bipolar disorder. They are important because NMDA receptor hypofunction is a potential key pathophysiological mechanism in schizophrenia (see the articles by Coyle<sup>124</sup> and Labrie and Roder<sup>125</sup> for review) and may be caused by altered NMDA recycling.<sup>126</sup> Furthermore, antipsychotics and mood stabilizers modulate CME to various degrees. For example, antipsychotics antagonize the interaction of dopamine D<sub>2</sub> receptors with the CME-associated protein  $\beta$ -arrestin-2,<sup>127</sup> and chlorpromazine inhibits CME.<sup>112</sup> Furthermore, lithium inhibits  $\beta$ -arrestin and may influence CME.<sup>128</sup> Finally, in keeping with our findings implicating cytoskeletal function in schizophrenia, there is growing evidence for a role of the actin cytoskeleton in CME through the modulation of cell membrane tension and the invagination of clathrin-coated pits.<sup>129</sup> Thus, our findings implicating cytoskeletal function and CME may be related. Future work will need to consider the functional aspects of CME within cellular domains such as within the postsynaptic density<sup>130</sup> where CME changes would directly affect NMDA recycling.

Our study has significant advantages such as its quantitative nature, reliability, and sensitivity.<sup>40,131</sup> There are also several potential limitations. Postmortem brain studies are potentially confounded by premortem and postmortem factors; thus, we statistically adjusted for the variation introduced by age, brain pH, postmortem interval, and refrigerator interval. We also carried out post hoc analyses within the disease groups for the effects of antipsychotic medication, mood stabilizers, and antidepressants (eTable 5). Forty-five proteins were implicated by these analyses, but most in the direction opposite to that observed in disease, thus arguing against our findings being due to medication effects. However, for 2 proteins relevant to our discussion, dynactin subunit 2 and FSCN1, alterations were in the same direction as that associated with mood stabilizers and may reflect treatment effects with mood stabilizers (although in the case of FSCN1, reduced expression was observed even after excluding subjects exposed to mood stabilizers [data not shown]). There was no evidence that the changes observed in any of the other validated proteins were due to psychotropic drug exposures. Furthermore, long-term exposure of mice to the antipsychotic drug haloperidol did not alter the expression of the proteins confirmed to be dysregulated in disease, suggesting that the changes observed in disease were not related to treatment with this antipsychotic agent. Nonetheless, while we can correct statistically for these potential confounders, such corrections are imperfect and it is possible that some of our findings are due in part to such confounders as drug exposure or environmental deprivation. Our findings should therefore be interpreted with some caution pending further information regarding the influence of these and other potential confounders. Finally, the 2D-DIGE method has some disadvantages such as the inability to resolve all proteins within a given proteome. Specific classes of proteins, particularly those with low abundance, exceptionally small or large proteins, and proteins that are highly

hydrophobic or basic, remain difficult to visualize.<sup>39</sup> For this reason, candidate transmembrane receptor proteins such as NMDA and GABA receptor proteins<sup>73</sup> were not resolved in our gels and were not assessed. Our data should be viewed as complementary to rather than opposing this previous literature.

A challenge of proteomic analysis involves the necessity of assessing multiple spots and the possibility of type I error. At the 5% level of significance, there was an excess of statistically significant spots (up to 8% depending on brain region). While an excess of statistically significant spots was found, these corresponded to, at most, moderate changes in protein abundance and the realized *P* values were not on a small enough scale to offset any adjustment of false discovery rate when brain regions were analyzed separately. However, many spots remained significant using the 5% level of false discovery rate when all 4 brain regions were analyzed together in a single model (as a factor) while allowing different brain regions to differ in effect (eTable 4 and eTable 5). This was a consequence of the greater precision arising from a greater number of replicates effectively analyzed. To further compensate for potential false-positive results, we also selected a number of proteins for validation.

Our innovative use of pooled samples for the validation work is unusual and was necessitated by the unique and small amounts of available tissue dissected by laser-assisted microdissection. We confirmed altered expression of ANXA6, PCMT1, SEPT11, and SPTAN1 in schizophrenia and/or bipolar disorder, but we could not confirm the altered expression of ARMCX1. Changes in FSCN1 were confirmed only in schizophrenia and not in bipolar disorder. Further, while it was not technically feasible for us to validate all of our findings, many of our findings are consistent with previous studies where altered expressions of dynamin-1,<sup>44,45,51</sup> neurofilament light polypeptide and neurofilament medium polypeptide,<sup>46,90</sup> N(G),N(G)-dimethylarginine dimethylaminohydrolase 1,<sup>42,90</sup> ubiquitin carboxyl-terminal hydrolase isozyme L1 and cathepsin D,<sup>90</sup>  $\alpha$ -internexin,<sup>44</sup> dihydropyrimidinase-related protein 2,<sup>42</sup> 14-3-3 protein,<sup>46,90</sup> stathmin,<sup>46,90</sup> fructose biphosphate aldolase C,<sup>46,50</sup> peroxiredoxins<sup>42,45,90</sup> and superoxide dismutase,<sup>51,90</sup>  $\alpha$ -enolase, and galectin-1<sup>42,46</sup> have been reported.

Our observation that a significant minority of proteins were differentially expressed in more than 1 hippocampal region in each disease offers reassurance that these latter changes are unlikely to represent chance findings. Thus, for 15 of 67 proteins shown to be differentially expressed in schizophrenia (eg, SEPT11, PCMT1, cathepsin D, adenosine triphosphate synthase, N(G),N(G)-dimethylarginine dimethylaminohydrolase 1) and 25 of 115 proteins for bipolar disorder (eg, PCMT1, adenosine triphosphate synthase, N(G),N(G)-dimethylarginine dimethylaminohydrolase 1, FSCN1, dynactin subunit 2), we also found similar significant changes in protein expression in 1 or more of the other hippocampal regions (eTable 4 and eTable 5). In the future, high-throughput validation methods such as multiple reaction monitoring,<sup>132</sup> a label-free relative quantitative proteomic analysis, may allow us to confirm a greater number of proteins regardless of antibody availability.

In conclusion, our findings provide novel insights into the common disease pathogenesis of both schizophrenia and bipolar disorder. They also show a particular focus of altered protein expression changes in the CA2/3 region of these disorders.

**Submitted for Publication:** August 6, 2010; final revision received November 1, 2010; accepted December 16, 2010.

**Correspondence:** David R. Cotter, MD, PhD, Department of Psychiatry, Royal College of Surgeons in Ireland, Education and Research Centre, Beaumont Hospital, Dublin 9, Ireland (drcotter@rcsi.ie).

**Financial Disclosure:** None reported.

**Funding/Support:** This work was supported by the Wellcome Trust, NARSAD, and the Stanley Medical Research Institute.

**Online-Only Material:** The eAppendix, eTables, and eFigure are available at <http://www.archgenpsychiatry.com>.

**Additional Contributions:** Postmortem brains were donated by the Stanley Foundation Brain Bank Consortium courtesy of Llewellyn B. Bigelow, MD, Maree J. Webster, PhD, and staff. Koh-ichi Nagata, MD, PhD, donated the SEPT11 antibody. We thank the donors. Lance Hudson, BSc, Niamh Connolly, MSc, and Conn Hastings, BSc, shared their expertise in laser-assisted microdissection and animal work, Caitriona Scaife, BSc, provided technical assistance in 2D-DIGE image analysis, Peter Knief, PhD, helped with the figures, and Mary Cannon, MD, PhD, provided input into the final manuscript. Access to and use of mass spectrometry instrumentation of the Conway Institute is gratefully acknowledged; Giuliano Elia, PhD, Cathy Rooney, BSc, and Kasper Pedersen, BSc provided technical assistance in mass spectrometry.

## REFERENCES

1. Harrison PJ. The hippocampus in schizophrenia: a review of the neuropathological evidence and its pathophysiological implications. *Psychopharmacology (Berl)*. 2004;174(1):151-162.
2. Wright IC, Rabe-Hesketh S, Woodruff PW, David AS, Murray RM, Bullmore ET. Meta-analysis of regional brain volumes in schizophrenia. *Am J Psychiatry*. 2000;157(1):16-25.
3. Velakoulis D, Wood SJ, Wong MT, McGorry PD, Yung A, Phillips L, Smith D, Brewer W, Proffitt T, Desmond P, Pantelis C. Hippocampal and amygdala volumes according to psychosis stage and diagnosis: a magnetic resonance imaging study of chronic schizophrenia, first-episode psychosis, and ultra-high-risk individuals. *Arch Gen Psychiatry*. 2006;63(2):139-149.
4. Lawrie SM, Whalley H, Kestelman JN, Abukmeil SS, Byrne M, Hodges A, Rimmington JE, Best JJ, Owens DG, Johnstone EC. Magnetic resonance imaging of brain in people at high risk of developing schizophrenia. *Lancet*. 1999;353(9146):30-33.
5. DeLisi LE, Sakuma M, Tew W, Kushner M, Hoff AL, Grimson R. Schizophrenia as a chronic active brain process: a study of progressive brain structural change subsequent to the onset of schizophrenia. *Psychiatry Res*. 1997;74(3):129-140.
6. Fornito A, Yücel M, Pantelis C. Reconciling neuroimaging and neuropathological findings in schizophrenia and bipolar disorder. *Curr Opin Psychiatry*. 2009;22(3):312-319.
7. Harrison PJ. The neuropathology of primary mood disorder. *Brain*. 2002;125(pt 7):1428-1449.
8. Savitz J, Drevets WC. Bipolar and major depressive disorder: neuroimaging the developmental-degenerative divide. *Neurosci Biobehav Rev*. 2009;33(5):699-771.
9. Konradi C, Eaton M, MacDonald ML, Walsh J, Benes FM, Heckers S. Molecular evidence for mitochondrial dysfunction in bipolar disorder. *Arch Gen Psychiatry*. 2004;61(3):300-308.



10. Amaral DG, Insausti R. Hippocampal formation. In: Paxinos G, ed. *The Human Nervous System*. San Diego, CA: Academic Press; 1990:711-735.
11. Duvernoy HM. *The Human Hippocampus: Functional Anatomy, Vascularization and Serial Sections With MRI*. 2nd ed. Berlin, Germany: Springer; 1998.
12. Cotter D, Kerwin R, al-Sarraj S, Brion JP, Chadwich A, Lovestone S, Anderton B, Everall I. Abnormalities of Wnt signalling in schizophrenia: evidence for neurodevelopmental abnormality. *Neuroreport*. 1998;9(7):1379-1383.
13. Holinger DP, Harrison PJ. Cerebral asymmetry. In: Harrison PJ, Roberts GW, eds. *The Neuropathology of Schizophrenia: Progress and Interpretation*. Oxford, England: Oxford University Press; 2000:151-171.
14. Heckers S, Heinsen H, Geiger B, Beckmann H. Hippocampal neuron number in schizophrenia: a stereological study. *Arch Gen Psychiatry*. 1991;48(11):1002-1008.
15. Benes FM, Sorensen I, Bird ED. Reduced neuronal size in posterior hippocampus of schizophrenic patients. *Schizophr Bull*. 1991;17(4):597-608.
16. Falkai P, Bogerts B. Cell loss in the hippocampus of schizophrenics. *Eur Arch Psychiatry Neurol Sci*. 1986;236(3):154-161.
17. Benes FM. Amygdalocortical circuitry in schizophrenia: from circuits to molecules. *Neuropsychopharmacology*. 2010;35(1):239-257.
18. Benes FM, Kwok EW, Vincent SL, Todtenkopf MS. A reduction of nonpyramidal cells in sector CA2 of schizophrenics and manic depressives. *Biol Psychiatry*. 1998;44(2):88-97.
19. Rosoklija G, Toomayan G, Ellis SP, Keilp J, Mann JJ, Latov N, Hays AP, Dwork AJ. Structural abnormalities of subicular dendrites in subjects with schizophrenia and mood disorders: preliminary findings. *Arch Gen Psychiatry*. 2000;57(4):349-356.
20. Kerwin R, Patel S, Meldrum B. Quantitative autoradiographic analysis of glutamate binding sites in the hippocampal formation in normal and schizophrenic brain post mortem. *Neuroscience*. 1990;39(1):25-32.
21. Law AJ, Weickert CS, Hyde TM, Kleinman JE, Harrison PJ. Reduced spinophilin but not microtubule-associated protein 2 expression in the hippocampal formation in schizophrenia and mood disorders: molecular evidence for a pathology of dendritic spines. *Am J Psychiatry*. 2004;161(10):1848-1855.
22. Harrison PJ, Eastwood SL. Neuropathological studies of synaptic connectivity in the hippocampal formation in schizophrenia. *Hippocampus*. 2001;11(5):508-519.
23. Uezato A, Meador-Woodruff JH, McCullumsmith RE. Vesicular glutamate transporter mRNA expression in the medial temporal lobe in major depressive disorder, bipolar disorder, and schizophrenia. *Bipolar Disord*. 2009;11(7):711-725.
24. Eastwood SL, Harrison PJ. Decreased expression of vesicular glutamate transporter 1 and complexin II mRNAs in schizophrenia: further evidence for a synaptic pathology affecting glutamate neurons. *Schizophr Res*. 2005;73(2-3):159-172.
25. Eastwood SL, Harrison PJ. Decreased mRNA expression of netrin-G1 and netrin-G2 in the temporal lobe in schizophrenia and bipolar disorder. *Neuropsychopharmacology*. 2008;33(4):933-945.
26. Barr AM, Young CE, Phillips AG, Honer WG. Selective effects of typical antipsychotic drugs on SNAP-25 and synaptophysin in the hippocampal trisynaptic pathway. *Int J Neuropsychopharmacol*. 2006;9(4):457-463.
27. Sawada K, Barr AM, Nakamura M, Arima K, Young CE, Dwork AJ, Falkai P, Phillips AG, Honer WG. Hippocampal complexin proteins and cognitive dysfunction in schizophrenia. *Arch Gen Psychiatry*. 2005;62(3):263-272.
28. Shi J, Levinson DF, Duan J, Sanders AR, Zheng Y, Pe'er I, Dudbridge F, Holmans PA, Whittemore AS, Mowry BJ, Olincy A, Amin F, Cloninger CR, Silverman JM, Buccola NG, Byerley WF, Black DW, Crowe RR, Oksenberg JR, Mirel DB, Kendler KS, Freedman R, Gejman PV. Common variants on chromosome 6p22.1 are associated with schizophrenia. *Nature*. 2009;460(7256):753-757.
29. Stefansson H, Ophoff RA, Steinberg S, Andreassen OA, Cichon S, Rujescu D, Werge T, Pietiläinen OP, Mors O, Mortensen PB, Sigurdsson E, Gustafsson O, Nyegaard M, Tuulio-Henriksson A, Ingason A, Hansen T, Suvisaari J, Lonqvist J, Paunio T, Borglum AD, Hartmann A, Fink-Jensen A, Nordentoft M, Hougaard D, Norgaard-Pedersen B, Böttcher Y, Olesen J, Breuer R, Möller HJ, Giegling I, Rasmussen HB, Timm S, Mattheisen M, Bitter I, Réthelyi JM, Magnusdottir BB, Sigmundsson T, Olason P, Masson G, Gulcher JR, Haraldsson M, Fossdal R, Thorgeirsson TE, Thorsteinsdottir U, Ruggeri M, Tosato S, Franke B, Strengman E, Kiemeny LA, Melle I, Djurovic S, Abramova L, Kaleda V, Sanjuan J, de Frutos R, Bramon E, Vassos E, Fraser G, Ettinger U, Picchioni M, Walker N, Toulopoulou T, Need AC, Ge D, Yoon JL, Shianna KV, Freimer NB, Cantor RM, Murray R, Kong A, Golimbet V, Carracedo A, Arango C, Costas J, Jönsson EG, Terenius L, Agartz I, Petursson H, Nöthen MM, Rietschel M, Matthews PM, Muglia P, Peltonen L, St Clair D, Goldstein DB, Stefansson K, Collier DA; Genetic Risk and Outcome in Psychosis. Common variants conferring risk of schizophrenia. *Nature*. 2009;460(7256):744-747.
30. Huffaker SJ, Chen J, Nicodemus KK, Sambataro F, Yang F, Mattay V, Lipska BK, Hyde TM, Song J, Rujescu D, Giegling I, Mayilyan K, Proust MJ, Soghoyan A, Caforio G, Callicott JH, Bertolino A, Meyer-Lindenberg A, Chang J, Ji Y, Egan MF, Goldberg TE, Kleinman JE, Lu B, Weinberger DR. A primate-specific, brain isoform of KCNH2 affects cortical physiology, cognition, neuronal repolarization and risk of schizophrenia. *Nat Med*. 2009;15(5):509-518.
31. Williams HJ, Norton N, Dwyer S, Moskvina V, Nikolov I, Carroll L, Georgieva L, Williams NM, Morris DW, Quinn EM, Giegling I, Ikeda M, Wood J, Lencz T, Hultman C, Lichtenstein P, Thiselton D, Maher BS, Malhotra AK, Riley B, Kendler KS, Gill M, Sullivan P, Sklar P, Purcell S, Nimgaonkar VL, Kirov G, Holmans P, Corvin A, Rujescu D, Craddock N, Owen MJ, O'Donovan MC; Molecular Genetics of Schizophrenia Collaboration (MGS) International Schizophrenia Consortium (ISC); SGENE-plus; GROUP. Fine mapping of ZNF804A and genome-wide significant evidence for its involvement in schizophrenia and bipolar disorder [published online April 6, 2010]. *Mol Psychiatry*. doi:10.1038/mp.2010.36.
32. Lichtenstein P, Yip BH, Björk C, Pawitan Y, Cannon TD, Sullivan PF, Hultman CM. Common genetic determinants of schizophrenia and bipolar disorder in Swedish families: a population-based study. *Lancet*. 2009;373(9659):234-239.
33. Owen MJ, Craddock N. Diagnosis of functional psychoses: time to face the future. *Lancet*. 2009;373(9659):190-191.
34. Baloyianni N, Tsangaris GT. The audacity of proteomics: a chance to overcome current challenges in schizophrenia research. *Expert Rev Proteomics*. 2009;6(6):661-674.
35. Anderson L, Seilhamer J. A comparison of selected mRNA and protein abundances in human liver. *Electrophoresis*. 1997;18(3-4):533-537.
36. Paulson L, Martin P, Persson A, Nilsson CL, Ljung E, Westman-Brinkmalm A, Eriksson PS, Blennow K, Davidsson P. Comparative genome- and proteome analysis of cerebral cortex from MK-801-treated rats. *J Neurosci Res*. 2003;71(4):526-533.
37. Bayés A, Grant SG. Neuroproteomics: understanding the molecular organization and complexity of the brain. *Nat Rev Neurosci*. 2009;10(9):635-646.
38. English JA, Pennington K, Dunn MJ, Cotter DR. The neuroproteomics of schizophrenia. *Biol Psychiatry*. 2011;69(2):163-172.
39. Görg A, Weiss W, Dunn MJ. Current two-dimensional electrophoresis technology for proteomics. *Proteomics*. 2004;4(12):3665-3685.
40. Tannu NS, Hemby SE. Two-dimensional fluorescence difference gel electrophoresis for comparative proteomics profiling. *Nat Protoc*. 2006;1(4):1732-1742.
41. Martins-de-Souza D, Gattaz WF, Schmitt A, Rewerts C, Maccarrone G, Dias-Neto E, Turck CW. Prefrontal cortex shotgun proteome analysis reveals altered calcium homeostasis and immune system imbalance in schizophrenia. *Eur Arch Psychiatry Clin Neurosci*. 2009;259(3):151-163.
42. Behan AT, Byrne C, Dunn MJ, Cagney G, Cotter DR. Proteomic analysis of membrane microdomain-associated proteins in the dorsolateral prefrontal cortex in schizophrenia and bipolar disorder reveals alterations in LAMP, STXBP1 and BASP1 protein expression. *Mol Psychiatry*. 2009;14(6):601-613.
43. Martins-de-Souza D, Gattaz WF, Schmitt A, Maccarrone G, Hunyadi-Gulyás E, Eberlin MN, Souza GH, Marangoni S, Novello JC, Turck CW, Dias-Neto E. Proteomic analysis of dorsolateral prefrontal cortex indicates the involvement of cytoskeleton, oligodendrocyte, energy metabolism and new potential markers in schizophrenia. *J Psychiatr Res*. 2009;43(11):978-986.
44. Pennington K, Beasley CL, Dicker P, Fagan A, English J, Pariante CM, Wait R, Dunn MJ, Cotter DR. Prominent synaptic and metabolic abnormalities revealed by proteomic analysis of the dorsolateral prefrontal cortex in schizophrenia and bipolar disorder. *Mol Psychiatry*. 2008;13(12):1102-1117.
45. Prabakaran S, Swatton JE, Ryan MM, Huffaker SJ, Huang JT, Griffin JL, Wayland M, Freeman T, Dudbridge F, Liley KS, Karp NA, Hester S, Tkachev D, Mimmack ML, Yolken RH, Webster MJ, Torrey EF, Bahn S. Mitochondrial dysfunction in schizophrenia: evidence for compromised brain metabolism and oxidative stress. *Mol Psychiatry*. 2004;9(7):684-697.
46. English JA, Dicker P, Föcking M, Dunn MJ, Cotter DR. 2-D DIGE analysis implicates cytoskeletal abnormalities in psychiatric disease. *Proteomics*. 2009;9(12):3368-3382.
47. Novikova SI, He F, Cutrufello NJ, Lidow MS. Identification of protein biomarkers for schizophrenia and bipolar disorder in the postmortem prefrontal cortex using SELDI-TOF-MS ProteinChip profiling combined with MALDI-TOF-PSD-MS analysis. *Neurobiol Dis*. 2006;23(1):61-76.
48. Johnston-Wilson NL, Sims CD, Hofmann JP, Anderson L, Shore AD, Torrey EF, Yolken RH; Stanley Neuropathology Consortium. Disease-specific alterations in frontal cortex brain proteins in schizophrenia, bipolar disorder, and major depressive disorder. *Mol Psychiatry*. 2000;5(2):142-149.
49. Chan MK, Tsang TM, Harris LW, Guest PC, Holmes E, Bahn S. Evidence for disease and antipsychotic medication effects in post-mortem brain from schizophrenia patients [published online October 5, 2010]. *Mol Psychiatry*. doi:10.1038/mp.2010.100.
50. Beasley CL, Pennington K, Behan A, Wait R, Dunn MJ, Cotter D. Proteomic analysis of the anterior cingulate cortex in the major psychiatric disorders: evidence for disease-associated changes. *Proteomics*. 2006;6(11):3414-3425.



51. Clark D, Dedova I, Cordwell S, Matsumoto I. A proteome analysis of the anterior cingulate cortex gray matter in schizophrenia. *Mol Psychiatry*. 2006; 11(5):459-470.
52. Martins-de-Souza D, Schmitt A, Röder R, Lebar M, Schneider-Axmann T, Falkai P, Turck CW. Sex-specific proteome differences in the anterior cingulate cortex of schizophrenia. *J Psychiatr Res*. 2010;44(14):989-991.
53. Martins-de-Souza D, Gattaz WF, Schmitt A, Rewerts C, Marangoni S, Novello JC, Maccarrone G, Turck CW, Dias-Meto E. Alterations in oligodendrocyte proteins, calcium homeostasis and new potential markers in schizophrenia anterior temporal lobe are revealed by shotgun proteome analysis. *J Neural Transm*. 2009;116(3):275-289.
54. Edgar PF, Douglas JE, Cooper GJ, Dean B, Kydd R, Faull RL. Comparative proteome analysis of the hippocampus implicates chromosome 6q in schizophrenia. *Mol Psychiatry*. 2000;5(1):85-90.
55. Mexal S, Berger R, Adams CE, Ross RG, Freedman R, Leonard S. Brain pH has a significant impact on human postmortem hippocampal gene expression profiles. *Brain Res*. 2006;1106(1):1-11.
56. Vawter MP, Tomita H, Meng F, Bolstad B, Li J, Evans S, Choudary P, Atz M, Shao L, Neal C, Walsh DM, Burmeister M, Speed T, Myers R, Jones EG, Watson SJ, Akil H, Bunney WE. Mitochondrial-related gene expression changes are sensitive to agonal-pH state: implications for brain disorders. *Mol Psychiatry*. 2006;11(7):615, 663-679.
57. Shekouh AR, Thompson CC, Prime W, Campbell F, Hamlett J, Herrington CS, Lemoine NR, Crnogorac-Jurcic T, Buechler MW, Friess H, Neoptolemos JP, Pennington SR, Costello E. Application of laser capture microdissection combined with two-dimensional electrophoresis for the discovery of differentially regulated proteins in pancreatic ductal adenocarcinoma. *Proteomics*. 2003; 3(10):1988-2001.
58. Pennington K, Dicker P, Dunn MJ, Cotter DR. Proteomic analysis reveals protein changes within layer 2 of the insular cortex in schizophrenia. *Proteomics*. 2008;8(23-24):5097-5107.
59. Föcking M, Boersema PJ, O'Donoghue N, Lubec G, Pennington SR, Cotter DR, Dunn MJ. 2-D DIGE as a quantitative tool for investigating the HUPO Brain Proteome Project mouse series. *Proteomics*. 2006;6(18):4914-4931.
60. Benjamini Y, Hochberg Y. Controlling the false discovery rate: a practical and powerful approach to multiple testing. *J R Stat Soc Series B Stat Methodol*. 1995;57(1):289-300.
61. Centorrino F, Eakin M, Bahk WM, Kelleher JP, Goren J, Salvatore P, Egli S, Baldessarini RJ. Inpatient antipsychotic drug use in 1998, 1993, and 1989. *Am J Psychiatry*. 2002;159(11):1932-1935.
62. Lau CG, Zukin RS. NMDA receptor trafficking in synaptic plasticity and neuropsychiatric disorders. *Nat Rev Neurosci*. 2007;8(6):413-426.
63. Benes FM, Berretta S. GABAergic interneurons: implications for understanding schizophrenia and bipolar disorder. *Neuropsychopharmacology*. 2001;25(1):1-27.
64. Benes FM, Khan Y, Vincent SL, Wickramasinghe R. Differences in the subregional and cellular distribution of GABA<sub>A</sub> receptor binding in the hippocampal formation of schizophrenic brain. *Synapse*. 1996;22(4):338-349.
65. Benes FM, Lim B, Matzilevich D, Walsh JP, Subburaju S, Minns M. Regulation of the GABA cell phenotype in hippocampus of schizophrenics and bipolars. *Proc Natl Acad Sci U S A*. 2007;104(24):10164-10169.
66. Benes FM, Todtenkopf MS. Effect of age and neuroleptics on tyrosine hydroxylase-IR in sector CA2 of schizophrenic brain. *Neuroreport*. 1999;10(17): 3527-3530.
67. Pantazopoulos H, Stone D, Walsh J, Benes FM. Differences in the cellular distribution of D1 receptor mRNA in the hippocampus of bipolars and schizophrenics. *Synapse*. 2004;54(3):147-155.
68. Todtenkopf MS, Benes FM. Distribution of glutamate decarboxylase65 immunoreactive puncta on pyramidal and nonpyramidal neurons in hippocampus of schizophrenic brain. *Synapse*. 1998;29(4):323-332.
69. Benes FM, Berretta S. Amygdalo-entorhinal inputs to the hippocampal formation in relation to schizophrenia. *Ann N Y Acad Sci*. 2000;911:293-304.
70. Berretta S, Lange N, Bhattacharyya S, Sebros R, Garces J, Benes FM. Long-term effects of amygdala GABA receptor blockade on specific subpopulations of hippocampal interneurons. *Hippocampus*. 2004;14(7):876-894.
71. Mizukami K, Sasaki M, Ishikawa M, Iwakiri M, Hidaka S, Shiraishi H, Iritani S. Immunohistochemical localization of gamma-aminobutyric acid(B) receptor in the hippocampus of subjects with schizophrenia. *Neurosci Lett*. 2000;283(2):101-104.
72. Knable MB, Barci BM, Webster MJ, Meador-Woodruff J, Torrey EF; Stanley Neuropathology Consortium. Molecular abnormalities of the hippocampus in severe psychiatric illness: postmortem findings from the Stanley Neuropathology Consortium. *Mol Psychiatry*. 2004;9(6):609-620.
73. Harrison PJ, Weinberger DR. Schizophrenia genes, gene expression, and neuropathology: on the matter of their convergence. *Mol Psychiatry*. 2005;10(1):40-68.
74. Dean B, Scarr E, McLeod M. Changes in hippocampal GABA<sub>A</sub> receptor subunit composition in bipolar 1 disorder. *Brain Res Mol Brain Res*. 2005;138(2): 145-155.
75. Benes FM, Todtenkopf MS, Kostoulakos P. GluR5,6,7 subunit immunoreactivity on apical pyramidal cell dendrites in hippocampus of schizophrenics and manic depressives. *Hippocampus*. 2001;11(5):482-491.
76. Cotter D, Landau S, Beasley C, Stevenson R, Chana G, MacMillan L, Everall I. The density and spatial distribution of GABAergic neurons, labelled using calcium binding proteins, in the anterior cingulate cortex in major depressive disorder, bipolar disorder, and schizophrenia. *Biol Psychiatry*. 2002;51(5):377-386.
77. Woo TU, Shrestha K, Armstrong C, Minns MM, Walsh JP, Benes FM. Differential alterations of kainate receptor subunits in inhibitory interneurons in the anterior cingulate cortex in schizophrenia and bipolar disorder. *Schizophr Res*. 2007;96(1-3):46-61.
78. Benes FM, Bird ED. An analysis of the arrangement of neurons in the cingulate cortex of schizophrenic patients. *Arch Gen Psychiatry*. 1987;44(7):608-616.
79. Benes FM. Neural circuitry models of schizophrenia: is it dopamine, GABA, glutamate, or something else? *Biol Psychiatry*. 2009;65(12):1003-1005.
80. Rosene DL, Van Hoesen GW. Hippocampal efferents reach widespread areas of cerebral cortex and amygdala in the rhesus monkey. *Science*. 1977;198(4314):315-317.
81. Heckers S, Konradi C. Hippocampal neurons in schizophrenia. *J Neural Transm*. 2002;109(5-6):891-905.
82. Schobel SA, Lewandowski NM, Corcoran CM, Moore H, Brown T, Malaspina D, Small SA. Differential targeting of the CA1 subfield of the hippocampal formation by schizophrenia and related psychotic disorders. *Arch Gen Psychiatry*. 2009;66(9):938-946.
83. Kolomeets NS, Orlovskaya DD, Uranova NA. Decreased numerical density of CA3 hippocampal mossy fiber synapses in schizophrenia. *Synapse*. 2007; 61(8):615-621.
84. McDonald C, Marshall N, Sham PC, Bullmore ET, Schulze K, Chapple B, Bramon E, Filbey F, Quraishi S, Walshe M, Murray RM. Regional brain morphometry in patients with schizophrenia or bipolar disorder and their unaffected relatives. *Am J Psychiatry*. 2006;163(3):478-487.
85. Ng WX, Lau IY, Graham S, Sim K. Neurobiological evidence for thalamic, hippocampal and related glutamatergic abnormalities in bipolar disorder: a review and synthesis. *Neurosci Biobehav Rev*. 2009;33(3):336-354.
86. Bilder RM, Bogerts B, Ashtari M, Wu H, Alvir JM, Jody D, Reiter G, Bell L, Lieberman JA. Anterior hippocampal volume reductions predict frontal lobe dysfunction in first episode schizophrenia. *Schizophr Res*. 1995;17(1):47-58.
87. Owen MJ, Craddock N, O'Donovan MC. Suggestion of roles for both common and rare risk variants in genome-wide studies of schizophrenia. *Arch Gen Psychiatry*. 2010;67(7):667-673.
88. Birmaher B, Axelson D, Monk K, Kalas C, Goldstein B, Hickey MB, Obreja M, Ehmann M, Iyengar S, Shamseddeen W, Kupfer D, Brent D. Lifetime psychiatric disorders in school-aged offspring of parents with bipolar disorder: the Pittsburgh Bipolar Offspring study. *Arch Gen Psychiatry*. 2009;66(3):287-296.
89. Carpenter WT, Bustillo JR, Thaker GK, van Os J, Krueger RF, Green MJ. The psychoses: cluster 3 of the proposed meta-structure for DSM-V and ICD-11. *Psychol Med*. 2009;39(12):2025-2042.
90. Nesvaderani M, Matsumoto I, Sivagnanasundaram S. Anterior hippocampus in schizophrenia pathogenesis: molecular evidence from a proteome study. *Aust N Z J Psychiatry*. 2009;43(4):310-322.
91. Benes FM, Matzilevich D, Burke RE, Walsh J. The expression of proapoptosis genes is increased in bipolar disorder, but not in schizophrenia. *Mol Psychiatry*. 2006;11(3):241-251.
92. Buttner N, Bhattacharyya S, Walsh J, Benes FM. DNA fragmentation is increased in non-GABAergic neurons in bipolar disorder but not in schizophrenia. *Schizophr Res*. 2007;93(1-3):33-41.
93. Mimmack ML, Ryan M, Baba H, Navarro-Ruiz J, Iritani S, Faull RL, McKenna PJ, Jones PB, Arai H, Starkey M, Emson PC, Bahn S. Gene expression analysis in schizophrenia: reproducible up-regulation of several members of the apolipoprotein L family located in a high-susceptibility locus for schizophrenia on chromosome 22. *Proc Natl Acad Sci U S A*. 2002;99(7):4680-4685.
94. Altar CA, Jurata LW, Charles V, Lemire A, Liu P, Bukhman Y, Young TA, Bullard J, Yokoe H, Webster MJ, Knable MB, Brockman JA. Deficient hippocampal neuron expression of proteasome, ubiquitin, and mitochondrial genes in multiple schizophrenia cohorts. *Biol Psychiatry*. 2005;58(2):85-96.
95. Shao L, Vawter MP. Shared gene expression alterations in schizophrenia and bipolar disorder. *Biol Psychiatry*. 2008;64(2):89-97.
96. Hemby SE, Ginsberg SD, Brunk B, Arnold SE, Trojanowski JQ, Eberwine JH. Gene expression profile for schizophrenia: discrete neuron transcription patterns in the entorhinal cortex. *Arch Gen Psychiatry*. 2002;59(7):631-640.
97. Ryan MM, Lockstone HE, Huffaker SJ, Wayland MT, Webster MJ, Bahn S. Gene expression analysis of bipolar disorder reveals downregulation of the ubiqu-

- uitin cycle and alterations in synaptic genes. *Mol Psychiatry*. 2006;11(10):965-978.
98. Mircnis K, Levitt P, Lewis DA. Critical appraisal of DNA microarrays in psychiatric genomics. *Biol Psychiatry*. 2006;60(2):163-176.
  99. Rietkerk T, Boks MP, Sommer IE, de Jong S, Kahn RS, Ophoff RA. Network analysis of positional candidate genes of schizophrenia highlights myelin-related pathways. *Mol Psychiatry*. 2009;14(4):353-355.
  100. Ide M, Lewis DA. Altered cortical CDC42 signaling pathways in schizophrenia: implications for dendritic spine deficits. *Biol Psychiatry*. 2010;68(1):25-32.
  101. Buser AM, Erne B, Werner HB, Nave KA, Schaeren-Wiemers N. The septin cytoskeleton in myelinating glia. *Mol Cell Neurosci*. 2009;40(2):156-166.
  102. Xie Y, Vessey JP, Konecna A, Dahm R, Macchi P, Kiebler MA. The GTP-binding protein Septin 7 is critical for dendrite branching and dendritic-spine morphology. *Curr Biol*. 2007;17(20):1746-1751.
  103. Li X, Serwanski DR, Miralles CP, Nagata K, De Blas AL. Septin 11 is present in GABAergic synapses and plays a functional role in the cytoarchitecture of neurons and GABAergic synaptic connectivity. *J Biol Chem*. 2009;284(25):17253-17265.
  104. Kraft R, Escobar MM, Narro ML, Kurtis JL, Efrat A, Barnard K, Restifo LL. Phenotypes of *Drosophila* brain neurons in primary culture reveal a role for fascin in neurite shape and trajectory. *J Neurosci*. 2006;26(34):8734-8747.
  105. Chang L, Goldman RD. Intermediate filaments mediate cytoskeletal crosstalk. *Nat Rev Mol Cell Biol*. 2004;5(8):601-613.
  106. Schmid EM, McMahon HT. Integrating molecular and network biology to decode endocytosis. *Nature*. 2007;448(7156):883-888.
  107. Mills IG, Praefcke GJ, Vallis Y, Peter BJ, Olesen LE, Gallop JL, Butler PJ, Evans PR, McMahon HT. EpsinR: an AP1/clathrin interacting protein involved in vesicle trafficking. *J Cell Biol*. 2003;160(2):213-222.
  108. Zhao Y, Gaidarov I, Keen JH. Phosphoinositide 3-kinase C2alpha links clathrin to microtubule-dependent movement. *J Biol Chem*. 2007;282(2):1249-1256.
  109. Mead CL, Kuzyk MA, Moradian A, Wilson GM, Holt RA, Morin GB. Cytosolic protein interactions of the schizophrenia susceptibility gene dysbindin. *J Neurochem*. 2010;113(6):1491-1503.
  110. Traub LM. Tickets to ride: selecting cargo for clathrin-regulated internalization. *Nat Rev Mol Cell Biol*. 2009;10(9):583-596.
  111. Jung N, Haucke V. Clathrin-mediated endocytosis at synapses. *Traffic*. 2007;8(9):1129-1136.
  112. Rodemer C, Haucke V. Clathrin/AP-2-dependent endocytosis: a novel playground for the pharmacological toolbox? *Handb Exp Pharmacol*. 2008;(186):105-122.
  113. Schubert KO, Föcking M, Dicker P, Dunn MJ, Cotter DR. Proteomic analysis of the basic sub-proteome (pH 6-11) in the hippocampus in schizophrenia and bipolar affective disorder. *Schizophr Res*. 2010;117(2-3):372. doi:10.1016/j.schres.2010.02.664.
  114. Sivagnanasundaram S, Crossett B, Dedova I, Cordwell S, Matsumoto I. Abnormal pathways in the genu of the corpus callosum in schizophrenia pathogenesis: a proteome study. *Proteomics Clin Appl*. 2007;1(10):1291-1305.
  115. Gray LJ, Dean B, Kronsbein HC, Robinson PJ, Scarr E. Region and diagnosis-specific changes in synaptic proteins in schizophrenia and bipolar I disorder. *Psychiatry Res*. 2010;178(2):374-380.
  116. Scarr E, Gray L, Keriakous D, Robinson PJ, Dean B. Increased levels of SNAP-25 and synaptophysin in the dorsolateral prefrontal cortex in bipolar I disorder. *Bipolar Disord*. 2006;8(2):133-143.
  117. Futter CE, White IJ. Annexins and endocytosis. *Traffic*. 2007;8(8):951-958.
  118. Grewal T, Heeren J, Mewawala D, Schnitgerhans T, Wendt D, Salomon G, Enrich C, Beisiegel U, Jäckle S. Annexin VI stimulates endocytosis and is involved in the trafficking of low density lipoprotein to the prelysosomal compartment. *J Biol Chem*. 2000;275(43):33806-33813.
  119. Kamal A, Ying Y, Anderson RG. Annexin VI-mediated loss of spectrin during coated pit budding is coupled to delivery of LDL to lysosomes. *J Cell Biol*. 1998;142(4):937-947.
  120. Doherty GJ, McMahon HT. Mediation, modulation, and consequences of membrane-cytoskeleton interactions. *Annu Rev Biophys*. 2008;37:65-95.
  121. Qualmann B, Kessels MM. Endocytosis and the cytoskeleton. *Int Rev Cytol*. 2002;220:93-144.
  122. Wechsler A, Teichberg VI. Brain spectrin binding to the NMDA receptor is regulated by phosphorylation, calcium and calmodulin. *EMBO J*. 1998;17(14):3931-3939.
  123. Vigneswara V, Lowenson JD, Powell CD, Thakur M, Bailey K, Clarke S, Ray DE, Carter WG. Proteomic identification of novel substrates of a protein isoaspartyl methyltransferase repair enzyme. *J Biol Chem*. 2006;281(43):32619-32629.
  124. Coyle JT. Glutamate and schizophrenia: beyond the dopamine hypothesis. *Cell Mol Neurobiol*. 2006;26(4-6):365-384.
  125. Labrie V, Roder JC. The involvement of the NMDA receptor D-serine/glycine site in the pathophysiology and treatment of schizophrenia. *Neurosci Biobehav Rev*. 2010;34(3):351-372.
  126. Javitt DC, Zukin SR. Recent advances in the phencyclidine model of schizophrenia. *Am J Psychiatry*. 1991;148(10):1301-1308.
  127. Masri B, Salahpour A, Didriksen M, Ghisi V, Beaulieu JM, Gainetdinov RR, Caron MG. Antagonism of dopamine D2 receptor/beta-arrestin 2 interaction is a common property of clinically effective antipsychotics. *Proc Natl Acad Sci U S A*. 2008;105(36):13656-13661.
  128. Clague MJ, Urbé S, de Lartigue J. Phosphoinositides and the endocytic pathway. *Exp Cell Res*. 2009;315(9):1627-1631.
  129. Galletta BJ, Mooren OL, Cooper JA. Actin dynamics and endocytosis in yeast and mammals. *Curr Opin Biotechnol*. 2010;21(5):604-610.
  130. Hahn CG, Banerjee A, Macdonald ML, Cho DS, Kamins J, Nie Z, Borgmann-Winter KE, Grosser T, Pizarro A, Ciccimaro E, Arnold SE, Wang HY, Blair IA. The post-synaptic density of human postmortem brain tissues: an experimental study paradigm for neuropsychiatric illnesses. *PLoS One*. 2009;4(4):e5251.
  131. Marouga R, David S, Hawkins E. The development of the DIGE system: 2D fluorescence difference gel analysis technology. *Anal Bioanal Chem*. 2005;382(3):669-678.
  132. Anderson L, Hunter CL. Quantitative mass spectrometric multiple reaction monitoring assays for major plasma proteins. *Mol Cell Proteomics*. 2006;5(4):573-588.