

1-7-2011

# The Marine-derived, Multi-mineral formula, Aquamin, Enhances Mineralisation of Osteoblast Cells In Vitro.

Denise M O'Gorman  
*Marigot Ltd, Cork*

Claire M. Tierney  
*Royal College of Surgeons in Ireland*

Orlaith Brennan  
*Royal College of Surgeons in Ireland, obrennan1@rcsi.ie*

Fergal J. O'Brien  
*Royal College of Surgeons in Ireland, fjobrien@rcsi.ie*

---

## Citation

O'Gorman DM, Tierney CM, Brennan O, O'Brien FJ. The marine-derived, multi-mineral formula, aquamin, enhances mineralisation of osteoblast cells in vitro. *Phytotherapy Research*. 2011 epub

This Article is brought to you for free and open access by the Department of Anatomy at e-publications@RCSI. It has been accepted for inclusion in Anatomy Articles by an authorized administrator of e-publications@RCSI. For more information, please contact [epubs@rcsi.ie](mailto:epubs@rcsi.ie).

**Attribution-Non-Commercial-ShareAlike 1.0**

**You are free:**

- to copy, distribute, display, and perform the work.
- to make derivative works.

**Under the following conditions:**

- Attribution — You must give the original author credit.
- Non-Commercial — You may not use this work for commercial purposes.
- Share Alike — If you alter, transform, or build upon this work, you may distribute the resulting work only under a licence identical to this one.

For any reuse or distribution, you must make clear to others the licence terms of this work. Any of these conditions can be waived if you get permission from the author.

Your fair use and other rights are in no way affected by the above.

---

This work is licenced under the Creative Commons Attribution-Non-Commercial-ShareAlike License. To view a copy of this licence, visit:

**URL (human-readable summary):**

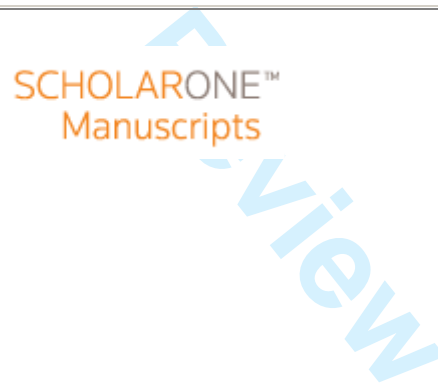
- <http://creativecommons.org/licenses/by-nc-sa/1.0/>

**URL (legal code):**

- <http://creativecommons.org/worldwide/uk/translated-license>
-

**The marine-derived, multi-mineral, Aquamin enhances mineralisation of osteoblast cells in-vitro.**

Journal:	<i>Phytotherapy Research</i>
Manuscript ID:	PTR-11-0019.R1
Wiley - Manuscript type:	Full Paper
Date Submitted by the Author:	28-Mar-2011
Complete List of Authors:	O'Gorman, Denise; Marigot Limited, Research Tierney, Claire; Royal College of Surgeons, Anatomy Brennan, Orlaith; Royal College of Surgeons, Anatomy O'Brien, Fergal; Royal College of Surgeons, Anatomy
Keyword:	Aquamin, Osteoblasts, Bone mineralisation



1  
2  
3  
4 **Title:** The marine-derived, multi-mineral, Aquamin enhances mineralisation of osteoblast  
5  
6  
7 cells *in-vitro*.

8  
9  
10  
11  
12  
13 **Authors:** Denise M O’Gorman<sup>1</sup>, Claire M Tierney<sup>2</sup>, Orlaith Brennan<sup>2</sup> and Fergal J  
14  
15 O’Brien<sup>2\*</sup>  
16

17  
18  
19 <sup>1</sup>Marigot Ltd, Strand Farm, Currabinny, Carrigaline, Co. Cork, Ireland  
20

21  
22 <sup>2</sup>Bone and Tissue Engineering Research Group, Department of Anatomy, Royal College of  
23  
24 Surgeons in Ireland, 123 St. Stephen’s Green, Dublin 2, Ireland  
25  
26

27  
28  
29  
30  
31 **\*Corresponding Author:** Fergal J. O’Brien, Department of Anatomy, Royal College of  
32  
33 Surgeons in Ireland, 123 St Stephen’s Green, Dublin 2, Ireland.  
34  
35

36 **Tel:** +353(0)1 4022149, **Fax:** +353(0)1 4022355, **Email:** [fjobrien@rcsi.ie](mailto:fjobrien@rcsi.ie)  
37  
38  
39  
40  
41  
42

43 **Short Title:** Aquamin-enhanced mineralisation of osteoblasts  
44  
45

46 **Key words:** Aquamin, Osteoblasts, Bone mineralisation  
47  
48  
49  
50  
51  
52  
53  
54  
55  
56  
57  
58  
59  
60

**Abstract:**

Osteoporosis is a global health problem characterised by low bone mass and an increase in bone fragility. It is now well accepted that dietary factors play a central role in bone development and health. Diet that lacks adequate minerals is considered to be a risk factor for osteoporosis. The food supplement, Aquamin, is a natural, multi-mineral derived from the red algae *Lithothamnion corallioides*, rich in calcium, magnesium and 72 other trace minerals. The aim of this study was to evaluate the effect of Aquamin on osteoblastic behaviour and mineralisation in a pre-osteoblastic cell line. Cell number and metabolic activity were assessed using Hoescht DNA and Alamar Blue assays respectively. Osteogenic differentiation was measured using an alkaline phosphatase assay while mineralisation was determined using von Kossa and alizarin red staining. It is reported here that Aquamin promotes increased mineralisation in osteoblast cell culture. These data suggest that the nutritional supplement, Aquamin plays an important role in promoting bone formation and may be useful in treating bone diseases such as osteoporosis.

## Introduction:

Osteoporosis is a condition characterised by low bone mass, low mineral content and microarchitectural deterioration leading to enhanced bone fragility and consequent increase in risk of bone fracture (Raisz 2005). Dietary factors are known to play an important role in bone health determining final bone mineral density and the extent of age-related bone-loss in later life (Palacios 2006). Diets lacking adequate inorganic minerals, especially calcium, have been identified as risk factors for osteoporosis (Peacock *et al.*, 2000). Although calcium is considered to be the most important mineral in bone, several other minerals are also known to play a major role in bone health including magnesium, manganese, copper, zinc and selenium (Nieves 2005; Palacios 2006). It is now accepted that many individuals who do not obtain the recommended daily amount (RDA) of these minerals from dietary sources depend on calcium and multi-mineral supplements.

Aquamin is a natural, marine-derived, multi-mineral rich in calcium and magnesium as well as measurable levels of 72 other minerals including manganese, selenium, copper and zinc. It is harvested from the skeletal remains of the red marine algae *Lithothamnion corallioides* from the cold Atlantic waters off the coasts of Ireland and Iceland.

Poor diets, especially those that contain a high proportion of fat, have been identified as risk factors for osteoporosis (Wohl *et al.*, 1998). In a recent 15 month study, mice were fed normal chow, a high fat western style diet (HFWD), or HFWD plus Aquamin. Results showed that HFWD mice lost a significant amount of bone compared to control mice, and that Aquamin reversed the negative effects of the HFWD (Aslam *et al.*, 2010a). **The authors were unable to identify why exactly Aquamin preserved bone structure and**

1  
2  
3  
4 function in the mice other than stating that many of the individual components of Aquamin  
5  
6 have a direct effect on bone structure and function. However, they hypothesised that the  
7  
8 positive effects of Aquamin on bone may also be a secondary response to the control of  
9  
10 systemic inflammation by Aquamin.  
11  
12

13  
14 Whether a direct result or as a secondary response Aquamin has also been shown to alter  
15  
16 markers of bone metabolism in yearling horses (Nielsen *et al.*, 2010). Treatment with  
17  
18 Aquamin resulted in an increase in osteocalcin, a marker of bone formation. In conjunction  
19  
20 with this was an increase in C-telopeptide crosslaps of type I collagen, a bone resorption  
21  
22 marker. This enhanced bone turnover may provide a means to remove and repair old or  
23  
24 damaged bone which is essential in maintaining bone health. As calcium is the main  
25  
26 constituent of Aquamin it is possible that the calcium present stimulates the production of  
27  
28 bone morphogenic proteins which increase proliferation of osteoblasts (Nakade *et al.*,  
29  
30 2001).  
31  
32  
33  
34  
35

36  
37 Aquamin has also been shown to be of benefit in joint health (Frestedt *et al.*, 2008; Frestedt  
38  
39 *et al.*, 2009). Two randomised, double-blind, placebo-controlled studies using Aquamin  
40  
41 showed reduction of osteoarthritic symptoms and increased activity scores in subjects with  
42  
43 moderate to severe osteoarthritis. It was proposed that this was mediated through tumor  
44  
45 necrosis factor alpha, a cytokine involved in systemic inflammation, and interleukin 1 $\beta$ , a  
46  
47 cytokine involved in the inflammatory response (Ryan *et al.*, 2010). Finally, in digestive  
48  
49 health a recent *in-vitro* study described the growth inhibitory effects of Aquamin on  
50  
51 calcium-sensitive and calcium-resistant colon carcinoma cells (Aslam *et al.*, 2009). Another  
52  
53  
54  
55  
56  
57  
58  
59  
60

1  
2  
3  
4 study showed how Aquamin inhibits polyp formation and inflammation in the  
5  
6 gastrointestinal tract of mice on a HFWD diet (Aslam *et al.*, 2010b).  
7  
8

9  
10 Osteoblasts play an essential role in bone metabolism and new bone formation (Parfitt  
11  
12 1984). Osteoblasts differentiate from mesenchymal cells and are responsible for the  
13  
14 synthesis of bone matrix and bone mineralization, synthesis of growth factors and  
15  
16 hormones and also for the regulation of osteoclastogenesis and bone resorption. The present  
17  
18 study was conducted to examine the effect of Aquamin on osteoblastic behaviour and  
19  
20 mineralisation in the mouse calvarial pre-osteoblastic MC3T3-E1 cell line. This cell line  
21  
22 has the ability to differentiate into mature osteoblast phenotype and to mineralise in the  
23  
24 presence of  $\beta$ -glycerophosphate and ascorbic acid (Menard *et al.*, 2000).  
25  
26  
27  
28

29  
30 In this study we test the hypothesis that Aquamin directly enhances osteogenesis by  
31  
32 providing not only an extra source of calcium but also other essential bone supporting  
33  
34 minerals necessary for the mineralisation of extra cellular matrix deposited by these cells.  
35  
36  
37  
38  
39  
40

## 41 **Materials and Methods**

42  
43  
44 **Aquamin:** This study employed the soluble form of Aquamin containing 12% calcium and  
45  
46 1% magnesium as well as trace quantities of other bone-supporting minerals including  
47  
48 manganese, selenium, copper and zinc as described recently (Aslam *et al.*, 2010a). The  
49  
50 mineralised fronds of the red marine algae *Lithothamnion corallioides* are prepared under  
51  
52 ISO and HACCP certification and sold as Aquamin<sup>®</sup> (EU and FDA approved, GRAS  
53  
54 000028) (Marigot Ltd, Cork, Ireland).  
55  
56  
57  
58  
59  
60



1  
2  
3  
4 The experimental dose for Aquamin (1mg/ml) was obtained from preliminary experiments  
5 which examined the pH of dose media, cell metabolic activity and cell number/viability in  
6 MC3T3-E1 cells (data not shown). Similar concentrations were used in previous  
7 experiments using low passage human dermal fibroblasts, colon carcinoma cell lines  
8 (Aslam *et al.*, 2009) and cortical glial-enriched primary cultures (Ryan *et al.*, 2010).  
9  
10  
11  
12  
13  
14  
15  
16

17 Unless otherwise stated, all consumables and chemicals were purchased from Sigma-  
18 Aldrich (Germany).  
19  
20  
21  
22

23 **Cell Culture:** This study was carried out in 2D using 6-well plates and 22mm discs.  
24 MC3T3-E1 murine calvarial osteoblasts were maintained in  $\alpha$ -modified MEM  
25 supplemented with 10% fetal bovine serum, 1% L-glutamine and 2%  
26 penicillin/streptomycin. The media was replaced every 3-4 days. Cells were detached using  
27 trypsin-EDTA, centrifuged at 500g for 5 minutes at 20°C and re-suspended to obtain a  
28 seeding density of 50,000 cells per disc. Osteogenic media was prepared with the addition  
29 of ascorbic acid (50 $\mu$ g/ml),  $\beta$ -glycerophosphate (10mM), dexamethasone (100nM) and  
30 Aquamin (Marigot Ltd., Cork, Ireland) at a dose of 1mg/ml to standard medium. An  
31 osteogenic media without the addition of Aquamin was used as a control.  
32  
33  
34  
35  
36  
37  
38  
39  
40  
41  
42  
43  
44

45 **Metabolic Activity:** Osteoblast activity was evaluated using AlamarBlue (Invitrogen) as  
46 described previously (O'Brien *et al.*, 2000). 4mls of supplemented  $\alpha$ -MEM media  
47 containing 10% alamarBlue solution was placed into each well at 24 hours and placed in a  
48 37°C incubator with 5% CO<sub>2</sub>. After 2.5 hours the plates were removed from the incubator  
49 and 100 $\mu$ l of the reduced alamarBlue supernatant was plated out in triplicate into a 96-well  
50  
51  
52  
53  
54  
55  
56  
57  
58  
59  
60

1  
2  
3  
4 plate and absorbance of the samples was read on a spectrometer (Titertrek Multiscan, MSC,  
5 Ireland) at 540nm and 620nm. Percentage reduction of the alamarBlue solution was  
6  
7 determined according to the manufacturer's specifications. This method was repeated at  
8  
9 every time point up to 28 days.  
10  
11  
12

13  
14 **Cell Number:** Cell number was determined using a DNA assay, Hoechst 33258 according  
15  
16 to a previously published protocol (Kim *et al.*, 1988). Cells were detached using trypsin-  
17  
18 EDTA. 3mls of media was added to each well and the cell suspension centrifuged at 500g  
19  
20 for 5 minutes. The cell pellet was then re-suspended in 400µl papain buffer solution  
21  
22 (100mls DPBS, 1ml 0.5M EDTA (pH 8.0), 79ml Cysteine-HCl; 10mg papain per 10ml  
23  
24 buffer), transferred to eppendorfs and incubated at 60°C for 40 minutes. A 10x solution of  
25  
26 Hoechst buffer was made: 10mM Tris, 10mM Na<sub>2</sub>EDTA, 1M NaCl; pH 7.4 and filter  
27  
28 sterilised. A working dye concentration was freshly made for each experiment at 0.1µg per  
29  
30 ml (1:10,000) dilution – 2mls 10x Hoechst buffer, 18mls distilled water, 2µl Hoechst stock  
31  
32 dye and protected from light. Once cell suspension had been fully digested, 30µl of each  
33  
34 sample was mixed with 600µl of working dye solution and vortexed briefly. The resulting  
35  
36 solution was plated out in triplicate and read at an excitation of 355nm and an emission of  
37  
38 460nm (Wallac Victor, PerkinElmer Life Sciences). Readings were converted to cell  
39  
40 number by standard curve. Controls were measured as blank scaffold samples digested in  
41  
42 papain. These experiments were repeated to provide a sample of n=3 for each time point for  
43  
44 28 days.  
45  
46  
47  
48  
49  
50  
51  
52

53 **Alkaline Phosphatase Expression (ALP):** ALP was chosen as a marker of early bone  
54  
55 formation and measured using a p-nitrophenyl phosphate (pNPP) assay as per  
56  
57  
58  
59  
60

1  
2  
3  
4  
5 **manufacturer's instructions.** 2mls of ALP lysis buffer (0.1M sodium acetate anhydrous, 2%  
6 triton-X 100<sup>®</sup>, 10mM pNPP solution) was added to each well and the plates incubated in  
7 the dark at 37°C for 1 hour. 200µl of the resulting supernatant was plated in triplicate into a  
8 96-well plate. 100µl of **0.3M NaOH** was added to each well to stop the reaction and the  
9 plates were read on a spectrometer (Titertrek MultiScan, MSC, Ireland) at 405nm at each  
10 time point and this was repeated to obtain n=3 for all time points. The results are presented  
11 with ALP expression **normalised to cell number evaluated from the** DNA assay,  
12  
13

14  
15  
16  
17  
18  
19  
20  
21  
22 **Mineralisation Staining:** Mineralisation was detected using von Kossa staining and was  
23 quantified with alizarin red absorbance readings. These techniques are used routinely in our  
24 laboratory (Gleeson *et al.*, 2010) .  
25  
26  
27

28  
29  
30 **Von Kossa Staining:** Cells were stained for the presence of mineralisation with Von Kossa  
31 stain which is highly specific for calcium/phosphate deposition. Disc sections over the 28  
32 days were prepared for staining and re-hydrated through a series of ethanol/distilled water  
33 baths. Once the sections had been re-hydrated, 5% silver nitrate solution was pipetted onto  
34 the surface of the disc and left under a lamp source for 1 hour. Discs were washed 3 times  
35 in distilled water and incubated with sodium thiosulphate for 2 mins. Discs were again  
36 washed and stained with toluidine blue as background staining for cells and dehydrated, **air-**  
37 **dried and cover-slipped before being viewed under light microscopy.**  
38  
39  
40  
41  
42  
43  
44  
45  
46  
47  
48

49  
50 **Alizarin Red S Staining:** Disc sections were stained with Alizarin Red S at the specified  
51 time intervals over the 28 day culture period. Alizarin red S attaches non-specifically to  
52 calcium and is used to observe if bone mineral has been deposited. Sections were re-  
53  
54  
55  
56  
57  
58  
59  
60

1  
2  
3  
4 hydrated through a series of ethanol/distilled water baths. Once sections had been re-  
5 hydrated, slides were placed into a bath containing 2% alizarin red S and left for 2 mins.  
6  
7 Sections were dehydrated back through water/ethanol but were left to dry completely  
8 without cover slip addition. A 10% acetylpyridinium chloride solution was made by  
9 dissolving the powder in distilled water by heating while stirring. 1ml of the resulting  
10 solution was added to each well. Plates were gently agitated on a rocker for 20 minutes. A  
11 100µl of the solution was pipetted in triplicate into a 96-well plate and read at 540nm. This  
12 was repeated for n=3 for all time points up to 28 days.  
13  
14  
15  
16  
17  
18  
19  
20  
21  
22  
23

24 **Statistical Analysis:** One-way ANOVA was used in all analyses with **Holm-Sidak t-test**  
25 **used for multiple comparisons.** Statistical significance was determined at  $p < 0.05$ .  
26  
27  
28  
29  
30  
31  
32  
33  
34  
35  
36  
37  
38  
39  
40  
41  
42  
43  
44  
45  
46  
47  
48  
49  
50  
51  
52  
53  
54  
55  
56  
57  
58  
59  
60

**Results:**

Cellular metabolic activity increased in both the untreated and Aquamin-treated groups over the course of the culture period. Statistically higher levels of metabolic activity ( $p \leq 0.047$ ) were seen at days 14, 21 and 28 relative to the earlier time points in both groups (Figure 1A). No difference in metabolic activity was found between the control and Aquamin-treated groups at any time point.

Statistical analysis indicated ( $p \leq 0.042$ ) that cell number was significantly increased by days 14, 21 and 28 relative to the earlier time points of days 1, 3 and 7 in both groups (Figure 1B). Cell number at day 21 in the control group exhibited the highest cell number during the culture period and was statistically higher ( $p \leq 0.016$ ) relative to all other groups and time points.

No ALP expression was found at day 1 while peak expression occurred at day 3 in both groups (Figure 2) with significantly higher expression found at days 3 and 7 than at days 1, 14, 21 and 28 in both groups ( $p \leq 0.005$ ). Notably, expression of ALP was significantly higher in the Aquamin-treated group compared to the control at day 21 ( $p \leq 0.05$ ) with no difference found at any of the other time points.

Control and Aquamin-treated discs were evaluated for calcium deposits using Von Kossa which labels deposits of calcium with silver nitrate (Figure 3). Toluidine blue staining was

1  
2  
3  
4 used for background visualisation of the cell layer. Red arrows show cell nodule formation  
5  
6 occurring among the cell layer. Deposits of calcium were first seen at Day 21 in the control  
7  
8 and Aquamin-treated group (Figure 3, G and H) and continued to day 28. Nodule formation  
9  
10 occurred as the culture period increased and osteoblasts tended to layer themselves within  
11  
12 these nodules. Mineral was first detected in these cell nodules.  
13  
14  
15  
16  
17  
18  
19

20 **Mineral deposition was also evaluated using alizarin red S at each time point.** Small  
21  
22 nodules of red-stained mineral appeared on all Aquamin-treated discs at day 14 (Figure.  
23  
24 4A, F) and continued to increase until staining was completely wide-spread throughout the  
25  
26 cell layer (Figure 4A, H and J). Small mineral deposits were seen at day 14 in the control  
27  
28 group; however mineral deposition did not increase dramatically during the culture period  
29  
30 up to day 28 and remained sparse when compared to the Aquamin-treated group. The cell  
31  
32 layer in all groups tended to form cell nodules as the culture period increased and the cells  
33  
34 started to layer themselves on each other. It is in these cell nodules that the mineral  
35  
36 deposition tends to occur first.  
37  
38  
39  
40

41  
42 When quantified, mineral deposition was seen to increase linearly over time in both groups  
43  
44 with no statistical effect observed between groups until day 28. At this time point  
45  
46 statistical analysis indicated that Aquamin resulted in increased mineral deposition ( $p <$   
47  
48 0.001) (Figure 4B).  
49  
50  
51  
52  
53  
54  
55  
56  
57  
58  
59  
60

## Discussion:

In this study we assessed the effects of the marine-derived, multi-mineral, Aquamin on osteoblast behaviour and mineralisation in the mouse calvarial pre-osteoblastic MC3T3-E1 cell line. Aquamin (EU and FDA approved, GRAS 000028) is sold globally by Marigot Ltd., Ireland following harvesting of *Lithothamnion corallioides*. The mineralised fronds are rich in calcium and magnesium and other essential minerals required for bone health including manganese, zinc, copper, selenium, phosphorous and boron (Nieves 2005). It was hypothesized that Aquamin, with its rich mineral supply, would have a positive osteogenic effect on the cellular behaviour and mineralising capacity of osteoblasts. **This study showed that Aquamin does not have any cytotoxic effect and possesses the ability to increase mineralisation by osteoblasts *in vitro*.**

**Untreated cells proliferated rapidly up until day 14 followed by a period of extracellular matrix development and mineralisation. This is consistent with previous studies (Stein and Lian 1993). A similar trend was observed in Aquamin-cultured cells whereby cell number was significantly increased by day 14 and this was followed by a period which saw no change in cell proliferation. Interestingly, there were significantly more cells in the control group at 21 days than in the Aquamin-cultured cells. However, by day 28 there was no significant difference in cell number between the two groups indicating that long term exposure of osteoblasts to Aquamin does not have a detrimental effect on osteoblast cell number.**

1  
2  
3  
4 Comparison between the treatment and non-treatment groups showed that Aquamin did not  
5 significantly affect metabolic activity. However, when taken in the context of cell number,  
6  
7 the reduced cell number at day 21 in the Aquamin-treated group implies that these cells  
8  
9 were more metabolically active than the untreated cells. As cell number was not  
10  
11 significantly increased in the day 28 Aquamin treated group, the results suggest the cells  
12  
13 have stopped proliferating and are undergoing differentiation which is consistent with the  
14  
15 increase in ALP expression seen at day 21 in Figure 2.  
16  
17  
18  
19

20  
21  
22 Differentiation of the pre-osteoblast to a mature phenotype results in the expression of  
23  
24 ALP, a bone enzyme which has become a hallmark of osteogenesis and mineralisation  
25  
26 (Simao *et al.*, 2007). While it may seem unusual that ALP expression was increased at days  
27  
28 3 and 7 in this study, it is important to remember that MC3T3-E1 cells are a partially  
29  
30 differentiated cell line. Therefore the introduction of these cells to osteogenic factors will  
31  
32 initiate production of the ALP enzyme. ALP production is also increased prior to mineral  
33  
34 production by osteoblasts (Stein and Lian 1993). This is reflected in the increased ALP  
35  
36 expression in the Aquamin treated group at day 21 prior to the increased mineralisation  
37  
38 which was observed and measured at day 28 in this treatment group.  
39  
40  
41  
42

43  
44 Qualitative analysis of mineralisation using Von Kossa staining showed increased  
45  
46 mineralisation in both groups over time. Mineralisation was located around individual cell  
47  
48 nodules although no clear differences were seen between groups. Visually, alizarin red S  
49  
50 staining was able to detect differences between the individual groups by day 21 with more  
51  
52 mineral visible in the Aquamin-treated cells. However, quantitatively no significant  
53  
54 differences were measured. Crucially though, Aquamin induced a significant increase in  
55  
56  
57  
58  
59  
60



1  
2  
3  
4 mineralisation by day 28 which was visible and quantifiable. This represented a 3 fold  
5  
6  
7 increase in mineralisation when compared to cells which were cultured in the absence of  
8  
9  
10 Aquamin.

11  
12 The lack of strong differences in Von Kossa staining at days 21 and day 28 between groups  
13  
14 may seem at odds with the alizarin red staining results. However, von Kossa staining is a  
15  
16 highly specific stain for calcium or calcium salt which primarily stains calcium phosphate  
17  
18 and calcium carbonate by binding the positive silver ion with the negative phosphate or  
19  
20 carbonate portion. In contrast, the alizarin red S stain is a far broader stain that is not  
21  
22 entirely specific for calcium since magnesium, manganese, barium, strontium and iron may  
23  
24 be stained during this process (manufacturer's information). Under normal circumstances  
25  
26 these elements do not usually occur in sufficient concentrations to affect staining however  
27  
28 all are present in Aquamin. Therefore, it appears as if these elements are synergistically  
29  
30 contributing to the amount of mineral deposition occurring in the cell layer. Despite the  
31  
32 apparent discrepancies, both techniques do show increased mineralisation at the later time  
33  
34 points and this is in agreement with previous reports where Aquamin was shown to be of  
35  
36 benefit in bone health (Aslam *et al.*, 2010a; Nielsen *et al.*, 2010). Other marine calcium  
37  
38 carbonate sources such as nacre (mother of pearl) from *Pinctada Maxima* also increase  
39  
40 mineralisation of MC3T3-E1 mouse pre-osteoblasts (Rousseau *et al.*, 2003).  
41  
42  
43  
44  
45  
46  
47

48  
49 A number of studies have shown that bone density can be increased with calcium  
50  
51 supplementation (Karkkainen *et al.*, 2010; Lips *et al.*, 2010). In the current study Aquamin  
52  
53 was found to significantly increase the mineralisation ability of osteoblasts. In an *in vivo*  
54  
55 situation this increased mineralisation would be expected to translate to an increase in bone  
56  
57  
58  
59  
60

1  
2  
3  
4 density. Whether this is the case will require further study, however, this study has shown  
5  
6 that Aquamin has a direct effect on the mineralisation capabilities of osteoblasts. In  
7  
8 previous studies it was hypothesised that Aquamin's positive effects on bone were a  
9  
10 secondary response to changes in systemic inflammation. While this may still be the case,  
11  
12 the current data proves that Aquamin directly influences the bone forming cells.  
13  
14  
15

16  
17 There is no doubt that calcium plays an important role in maintaining bone health.  
18  
19 Although recent research has suggested an increased risk of cardiovascular events in people  
20  
21 taking high doses of calcium supplements (Bolland *et al.*, 2010). This increased  
22  
23 cardiovascular risk does not appear when the calcium is taken in the form of a food  
24  
25 supplement (Reid *et al.*, 2011). As Aquamin is a natural calcium-rich food none of the  
26  
27 potential risks associated with high doses of calcium supplementation have been reported.  
28  
29  
30

31  
32 This study has a number of limitations one of which is the use of MC3T3 cells, a murine  
33  
34 immortalised cell line. A primary culture of human osteoblasts may provide a better  
35  
36 indication of osteoblast cell response. In addition, a more comprehensive analysis of the  
37  
38 genes and proteins associated with the process of osteogenesis might help our  
39  
40 understanding of the process by which Aquamin enhances osteoblast activity. Although  
41  
42 calcium is the most abundant mineral in Aquamin, we do not yet know which of the  
43  
44 multiple minerals present contribute to the observed effects. However, it is likely that many  
45  
46 of the components synergistically interact to influence bone structure and function and  
47  
48 enhance normal mineralisation in osteoblast cells. A potential drawback of this study was  
49  
50 the use of toluidine blue as a counterstain in the von Kossa staining rather than nuclear fast  
51  
52  
53  
54  
55  
56  
57  
58  
59  
60

1  
2  
3  
4 red. This dark blue stain makes it difficult to identify the mineralised nodules which appear  
5  
6  
7 as a dark brown/black colour.  
8

9  
10 Despite these limitations, this study has shown qualitatively that Aquamin can directly  
11  
12 influence osteoblast activity. Where previously it was hypothesised that changes in bone  
13  
14 metabolism were an indirect response to changes in systemic inflammation this study has  
15  
16 shown that Aquamin can directly influence osteoblasts to produce more mineral. This study  
17  
18 does represent the first steps towards understanding how Aquamin improves bone health.  
19  
20

21  
22 In summary, although it is accepted that further research in both explants and animals is  
23  
24 needed, this initial study has demonstrated that Aquamin shows no cytotoxicity in osteoblast  
25  
26 cell culture and increases mineralisation. It may therefore possess significant potential for  
27  
28 treating bone diseases such as osteoporosis.  
29  
30

31  
32  
33 **Acknowledgements:** The materials for this project were funded by Marigot Ltd. CMT, OB  
34  
35 and FOB received no financial contribution. There are no conflicts of interest.  
36  
37  
38  
39  
40  
41  
42  
43  
44  
45  
46  
47  
48  
49  
50  
51  
52  
53  
54  
55  
56  
57  
58  
59  
60

- 1  
2  
3  
4  
5  
6  
7 Aslam MN, Bhagavathula N, Paruchuri T, Hu X, Chakrabarty S, Varani J. 2009. Growth-  
8  
9 inhibitory effects of a mineralized extract from the red marine algae, *Lithothamnion*  
10  
11 *calcareum*, on Ca(2+)-sensitive and Ca(2+)-resistant human colon carcinoma cells.  
12  
13 *Cancer Lett* **283**: 186-192.  
14  
15
- 16 Aslam MN, Kreider JM, Paruchuri T, Bhagavathula N, DaSilva M, Zernicke RF, Goldstein  
17  
18 SA, Varani J. 2010a. A mineral-rich extract from the red marine algae  
19  
20 *Lithothamnion calcareum* preserves bone structure and function in female mice on a  
21  
22 Western-style diet. *Calcif Tissue Int* **86**: 313-324.  
23  
24
- 25 Aslam MN, Paruchuri T, Bhagavathula N, Varani J. 2010b. A mineral-rich red algae extract  
26  
27 inhibits polyp formation and inflammation in the gastrointestinal tract of mice on a  
28  
29 high-fat diet. *Integr Cancer Ther* **9**: 93-99.  
30  
31
- 32 Bolland MJ, Avenell A, Baron JA, Grey A, MacLennan GS, Gamble GD, Reid IR. 2010.  
33  
34 Effect of calcium supplements on risk of myocardial infarction and cardiovascular  
35  
36 events: meta-analysis. *BMJ* **341**: c3691.  
37  
38
- 39 Frestedt JL, Kuskowski MA, Zenk JL. 2009. A natural seaweed derived mineral  
40  
41 supplement (Aquamin F) for knee osteoarthritis: a randomised, placebo controlled  
42  
43 pilot study. *Nutr J* **8**: 7-14.  
44  
45
- 46 Frestedt JL, Walsh M, Kuskowski MA, Zenk JL. 2008. A natural mineral supplement  
47  
48 provides relief from knee osteoarthritis symptoms: a randomized controlled pilot  
49  
50 trial. *Nutr J* **7**: 9-15.  
51  
52  
53  
54  
55  
56  
57  
58  
59  
60

- 1  
2  
3  
4 Gleeson JP, Plunkett NA, O'Brien FJ. 2010. Addition of hydroxyapatite improves stiffness,  
5  
6 interconnectivity and osteogenic potential of a highly porous collagen-based  
7  
8 scaffold for bone tissue regeneration. *Eur Cell Mater* **20**: 218-230.  
9  
10  
11 Karkkainen M, Tuppurainen M, Salovaara K, Sandini L, Rikkinen T, Sirola J, Honkanen  
12  
13 R, Jurvelin J, Alhava E, Kroger H. 2010. Effect of calcium and vitamin D  
14  
15 supplementation on bone mineral density in women aged 65-71 years: a 3-year  
16  
17 randomized population-based trial (OSTPRE-FPS). *Osteoporos Int* **21**: 2047-2055.  
18  
19  
20 Kim YJ, Sah RL, Doong JY, Grodzinsky AJ. 1988. Fluorometric assay of DNA in cartilage  
21  
22 explants using Hoechst 33258. *Anal Biochem* **174**: 168-176.  
23  
24  
25 Lips P, Bouillon R, van Schoor NM, Vanderschueren D, Verschueren S, Kuchuk N,  
26  
27 Milisen K, Boonen S. 2010. Reducing fracture risk with calcium and vitamin D.  
28  
29 *Clin Endocrinol (Oxf)* **73**: 277-285.  
30  
31  
32 Menard C, Mitchell S, Spector M. 2000. Contractile behavior of smooth muscle actin-  
33  
34 containing osteoblasts in collagen-GAG matrices in vitro: implant-related cell  
35  
36 contraction. *Biomaterials* **21**: 1867-1877.  
37  
38  
39 Nakade O, Takahashi K, Takuma T, Aoki T, Kaku, T. 2001. Effect of extracellular calcium  
40  
41 on the gene expression of bone morphogenetic protein-2 and -4 of normal human  
42  
43 bone cells. *J Bone Miner Metab* **19**: 13-19.  
44  
45  
46 Nielsen BD, Cate RE, O'Connor-Robison CI. 2010. A marine mineral supplement alters  
47  
48 markers of bone metabolism in yearling arabian horses. *J Equine Vet Sci* **30**: 419-  
49  
50 424.  
51  
52  
53 Nieves JW. 2005. Osteoporosis: the role of micronutrients. *Am J Clin Nutr* **81**: 1232S-  
54  
55 1239S.  
56  
57  
58  
59  
60

- 1  
2  
3  
4 O'Brien J, Wilson I, Orton T, Pognan F. 2000. Investigation of the Alamar Blue (resazurin)  
5  
6 fluorescent dye for the assessment of mammalian cell cytotoxicity. *Eur J Biochem*  
7  
8 **267**: 5421-5426.  
9  
10  
11 Palacios C. 2006. The role of nutrients in bone health, from A to Z. *Crit Rev Food Sci Nutr*  
12  
13 **46**: 621-628.  
14  
15  
16 Parfitt AM. 1984. The cellular basis of bone remodeling: the quantum concept reexamined  
17  
18 in light of recent advances in the cell biology of bone. *Calcif Tissue Int* **36** Suppl 1:  
19  
20 S37-45.  
21  
22  
23 Peacock M, Liu G, Carey M, McClintock R, Ambrosius W, Hui S, Johnston CC. 2000.  
24  
25 Effect of calcium or 25OH vitamin D3 dietary supplementation on bone loss at the  
26  
27 hip in men and women over the age of 60. *J Clin Endocrinol Metab* **85**: 3011-3019.  
28  
29  
30 Raisz LG. 2005. Pathogenesis of osteoporosis: concepts, conflicts, and prospects. *J Clin*  
31  
32 *Invest* **115**: 3318-3325.  
33  
34  
35 Reid IR, Bolland MJ, Avenell A, Grey A. 2011. Cardiovascular effects of calcium  
36  
37 supplementation. *Osteoporos Int*. Mar 16.  
38  
39  
40 Rousseau M, Pereira-Mouries L, Almeida MJ, Milet C, Lopez E. 2003. The water-soluble  
41  
42 matrix fraction from the nacre of *Pinctada maxima* produces earlier mineralization  
43  
44 of MC3T3-E1 mouse pre-osteoblasts. *Comp Biochem Physiol B Biochem Mol Biol*  
45  
46 **135**: 1-7.  
47  
48  
49 Ryan S, O'Gorman DM, Nolan YM. 2010. Evidence that the marine-derived multi-mineral  
50  
51 Aquamin has anti-inflammatory effects on cortical glial-enriched cultures.  
52  
53 *Phytother. Res*. DOI: 10.1002/ptr.3309.  
54  
55  
56  
57  
58  
59  
60

1  
2  
3  
4 Simao AM, Beloti MM, Cezarino RM, Rosa AL, Pizauro JM, Ciancaglini P. 2007.

5  
6 Membrane-bound alkaline phosphatase from ectopic mineralization and rat bone  
7  
8 marrow cell culture. *Comp Biochem Physiol A Mol Integr Physiol* **146**: 679-687.

9  
10  
11 Stein GS and Lian JB. 1993. Molecular mechanisms mediating proliferation/differentiation  
12  
13 interrelationships during progressive development of the osteoblast phenotype.

14  
15  
16 *Endocr Rev* **14**: 424-442.

17  
18 Wohl GR, Loehrke L, Watkins BA, Zernicke RF. 1998. Effects of high-fat diet on mature  
19  
20 bone mineral content, structure, and mechanical properties. *Calcif Tissue Int* **63**: 74-

21  
22  
23  
24  
25  
26  
27  
28  
29  
30  
31  
32  
33  
34  
35  
36  
37  
38  
39  
40  
41  
42  
43  
44  
45  
46  
47  
48  
49  
50  
51  
52  
53  
54  
55  
56  
57  
58  
59  
60  
79.

1  
2  
3  
4 **Figure 1: Effect of Aquamin on metabolic activity (A) and cell number (B) over 28**  
5 **days.** Cell metabolic activity was determined at 1, 3, 7, 14, 21 and 28 days using  
6 alamarBlue™ assay (1A). Results are expressed as % reduction (n=6). Error bars represent  
7 S.D. \* =  $p \leq 0.047$  relative to Days 1, 3 and 7. **Cell number was determined using a Hoescht**  
8 **DNA assay (1B).** Error bars represent S.D. n=3 for each time point. \* =  $p \leq 0.042$  relative to  
9 days 1, 3 and 7. \*\* =  $p \leq 0.05$  relative to all other groups and time points.  
10  
11  
12  
13  
14  
15  
16  
17  
18

19 **Figure 2: Effect of Aquamin on the expression of alkaline phosphatase.** **Alkaline**  
20 **phosphatase expression was determined via a pNPP assay and normalised to cell number.**  
21 **Expression was significantly higher in both groups at days 3 and 7 than days 1, 14, 21 and**  
22 **28. Normalised ALP expression in the Aquamin treated group was greater than in the**  
23 **control group at day 21. Error bars represent S.D. n=3 for each time point. \* =  $p \leq 0.005$  \*\***  
24 **=  $p \leq 0.05$ .**  
25  
26  
27  
28  
29  
30  
31  
32  
33

34 **Figure 3: Mineralisation staining with Von Kossa.** Visualised using 100x magnification  
35 (A) Control Day 3 (B) Aquamin Day 3 (C) Control Day 7 (D) Aquamin Day 7 (E) Control  
36 Day 14 (F) Aquamin Day 14. (G) Control Day 21 (H) Aquamin Day 21 (I) Control Day 28  
37 (J) Aquamin Day 28. Red arrows indicate cell nodule formation coupled with dark specks  
38 of the black Von Kossa stain indicated by the yellow arrows.  
39  
40  
41  
42  
43  
44  
45  
46

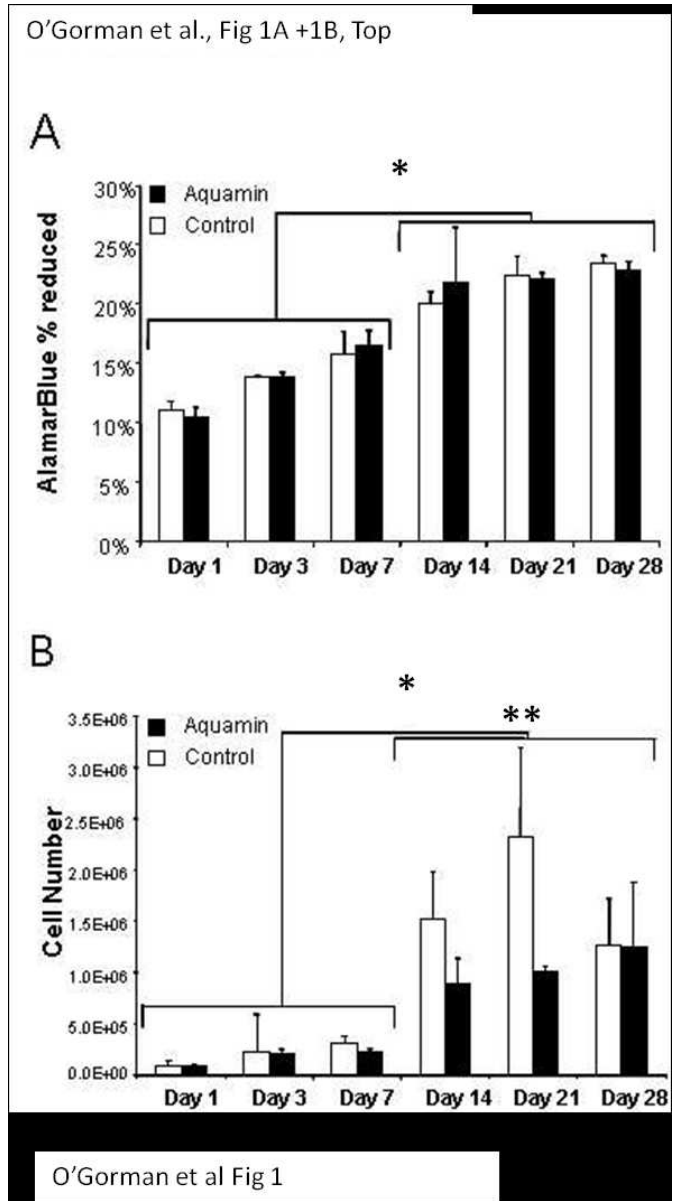
47 **Figure 4: Mineralisation staining with Alizarin Red S.** (A) Visualised using 100x  
48 magnification (A) Control Day 3 (B) Aquamin Day 3 (C) Control Day 7 (D) Aquamin Day  
49 7 (E) Control Day 14 (F) Aquamin Day 14. (G) Control Day 21 (H) Aquamin Day 21 (I)  
50 Control Day 28 (J) Aquamin Day 28. Black arrows indicate cell nodule formation and  
51  
52  
53  
54  
55  
56  
57  
58  
59  
60



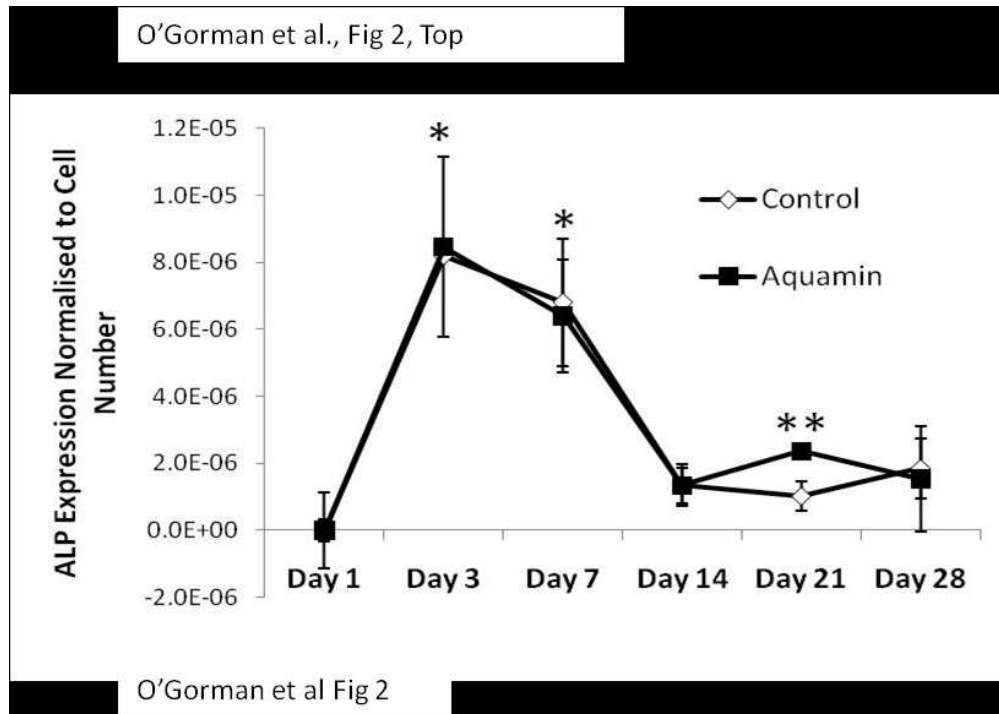
1  
2  
3  
4 yellow arrows indicate small mineral deposits. (B) Mineral was quantified using alizarin  
5  
6 red S assay. Error bars represent S.D. n=3. \* =  $p < 0.001$  relative to all other groups and time  
7  
8 points. \*\* =  $p \leq 0.018$  relative to Control and Aquamin at Day 1.  
9  
10  
11  
12  
13  
14  
15  
16  
17  
18  
19  
20  
21  
22  
23  
24  
25  
26  
27  
28  
29  
30  
31  
32  
33  
34  
35  
36  
37  
38  
39  
40  
41  
42  
43  
44  
45  
46  
47  
48  
49  
50  
51  
52  
53  
54  
55  
56  
57  
58  
59  
60

For Peer Review

1  
2  
3  
4  
5  
6  
7  
8  
9  
10  
11  
12  
13  
14  
15  
16  
17  
18  
19  
20  
21  
22  
23  
24  
25  
26  
27  
28  
29  
30  
31  
32  
33  
34  
35  
36  
37  
38  
39  
40  
41  
42  
43  
44  
45  
46  
47  
48  
49  
50  
51  
52  
53  
54  
55  
56  
57  
58  
59  
60

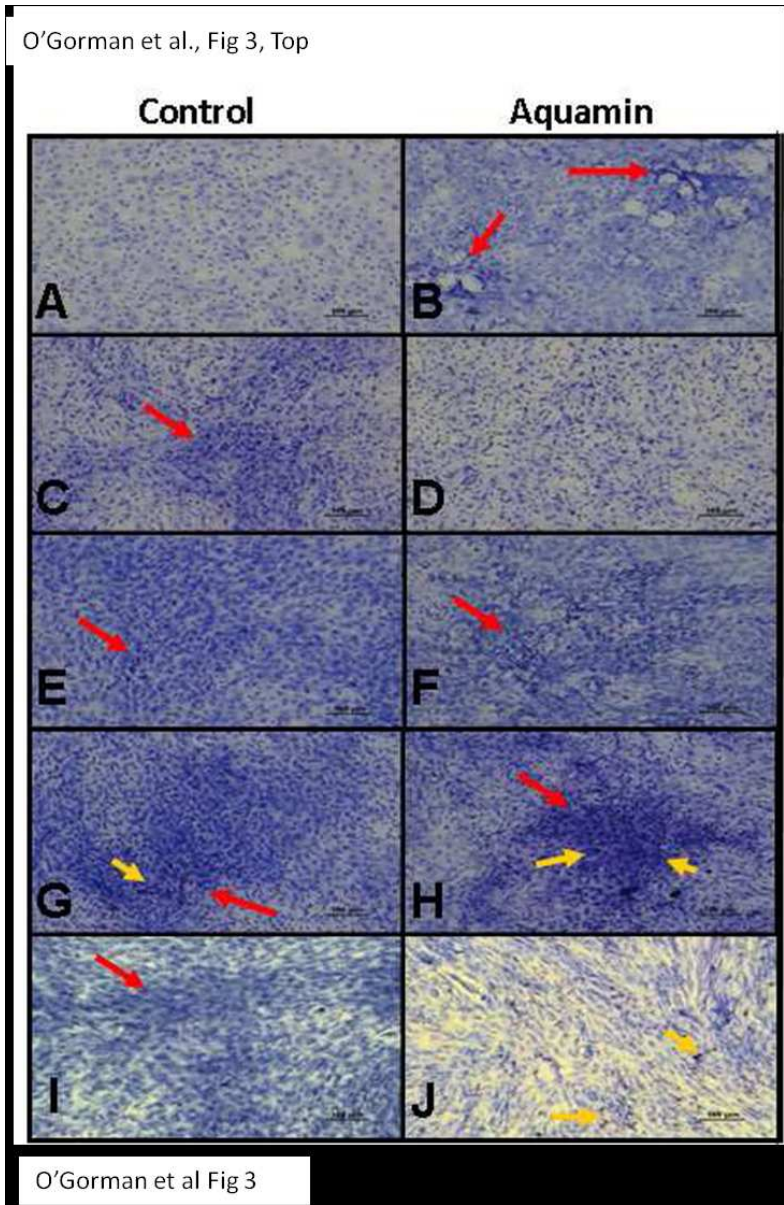


O’Gorman et al., Fig 1  
100x181mm (150 x 150 DPI)



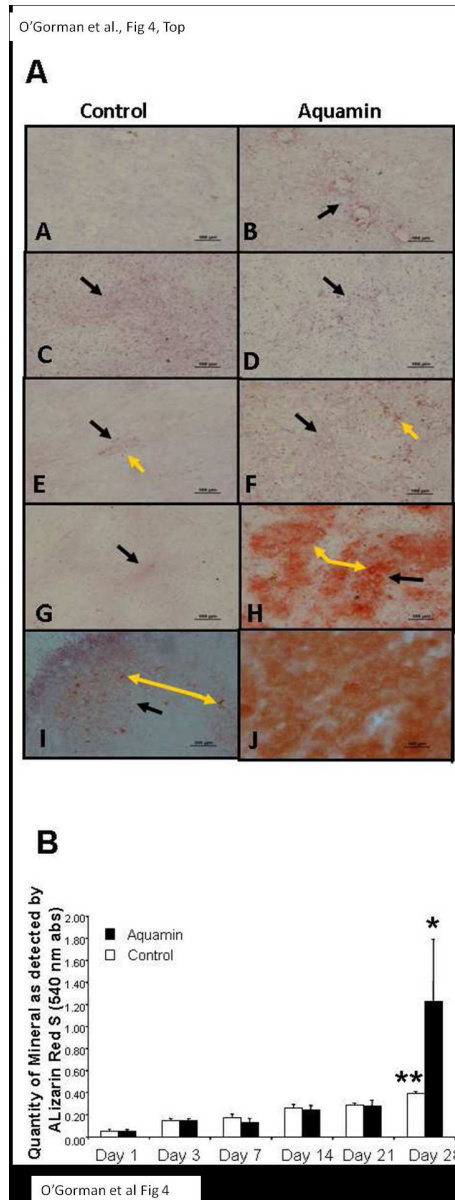
O'Gorman et al., Fig 2  
138x98mm (150 x 150 DPI)

1  
2  
3  
4  
5  
6  
7  
8  
9  
10  
11  
12  
13  
14  
15  
16  
17  
18  
19  
20  
21  
22  
23  
24  
25  
26  
27  
28  
29  
30  
31  
32  
33  
34  
35  
36  
37  
38  
39  
40  
41  
42  
43  
44  
45  
46  
47  
48  
49  
50  
51  
52  
53  
54  
55  
56  
57  
58  
59  
60



O'Gorman et al., Fig 3  
123x189mm (150 x 150 DPI)

1  
2  
3  
4  
5  
6  
7  
8  
9  
10  
11  
12  
13  
14  
15  
16  
17  
18  
19  
20  
21  
22  
23  
24  
25  
26  
27  
28  
29  
30  
31  
32  
33  
34  
35  
36  
37  
38  
39  
40  
41  
42  
43  
44  
45  
46  
47  
48  
49  
50  
51  
52  
53  
54  
55  
56  
57  
58  
59  
60



O'Gorman et al Fig 4  
123x327mm (150 x 150 DPI)